

THE **FREE** WESSEX ARTS AND CULTURE GUIDE

# EVOLVER

November and December 2018





HESTERCOMBE GALLERY  
Contemporary art in reclaimed spaces

10.11.18 - 24.02.19



Supported using public funding by  
ARTS COUNCIL  
ENGLAND

hestercombe.com

Image: Sarah Bennett, Pear Pond No.1, 2018, silver on glass with reflection

# Materiality: Provisional States

Sarah Bennett, Megan Calver, Philippa Lawrence

RUSSELL-COTES  
HOUSE • GALLERY • GARDEN

# CHINA

THROUGH THE LENS OF  
JOHN THOMSON 1868-72

2 November 2018  
– 2 June 2019

East Cliff, Bournemouth  
Dorset BH1 3AA  
[www.russellcotes.com](http://www.russellcotes.com)

Images from Wellcome Library London

晚清碎影



# EVOLVER 108

## EXHIBIT A



### HARRY BROCKWAY: 'THE WASTE LAND'

Wood engraving (2018)

ARTIST'S STATEMENT: "My illustrations are prints produced by engraving onto end grain wood blocks. Wood engraving was developed by Thomas Bewick in the 18th century, before the invention of photography, as a means of producing black and white images to set alongside type. My work is figurative and I often take my inspiration from literary sources. All of which makes my prints particularly suitable for book illustration."

Illustration © 2018 Harry Brockway from The Folio Society edition of Evelyn Waugh's *Brideshead Revisited*

#### EVOLVER

THE WESSEX ARTS AND CULTURE GUIDE

Editor SIMON BARBER

Assisted by SUZY RUSHBROOK

Evolver Writers

FIONA ROBINSON [www.fionarobinson.com](http://www.fionarobinson.com)

Graphic Design SIMON BARBER

Website OLIVER CONINGHAM at AZTEC MEDIA

Front Cover

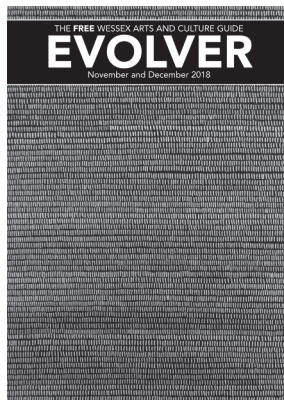
HANNA MARGETSON-RUSHMORE

'MARK FIELD (SERIES 2 - 1)'

Acrylic pen on paper (2018)

#### EVOLVER MEDIA

8 BUCKLAND ROAD, PEN MILL TRADING ESTATE,  
YEOVIL, SOMERSET BA21 5EA



Email [simon@evolver.org.uk](mailto:simon@evolver.org.uk)

Telephone 01935 808441

Website [evolver.org.uk](http://evolver.org.uk)

Instagram [evolvermagazine](https://www.instagram.com/evolvermagazine)

Twitter @SimonEvolver

Facebook [facebook.com/EvolverMagazine](https://www.facebook.com/EvolverMagazine)

Published by EVOLVER MEDIA LIMITED

Pre-Press by FLAYDEMOUSE

01935 479453 / [flaydemouse.com](mailto:flaydemouse.com)

Printed by STEPHENS & GEORGE

Distributed by ACOUSTIC

07456 009377 / [everett190@btinternet.com](mailto:everett190@btinternet.com)

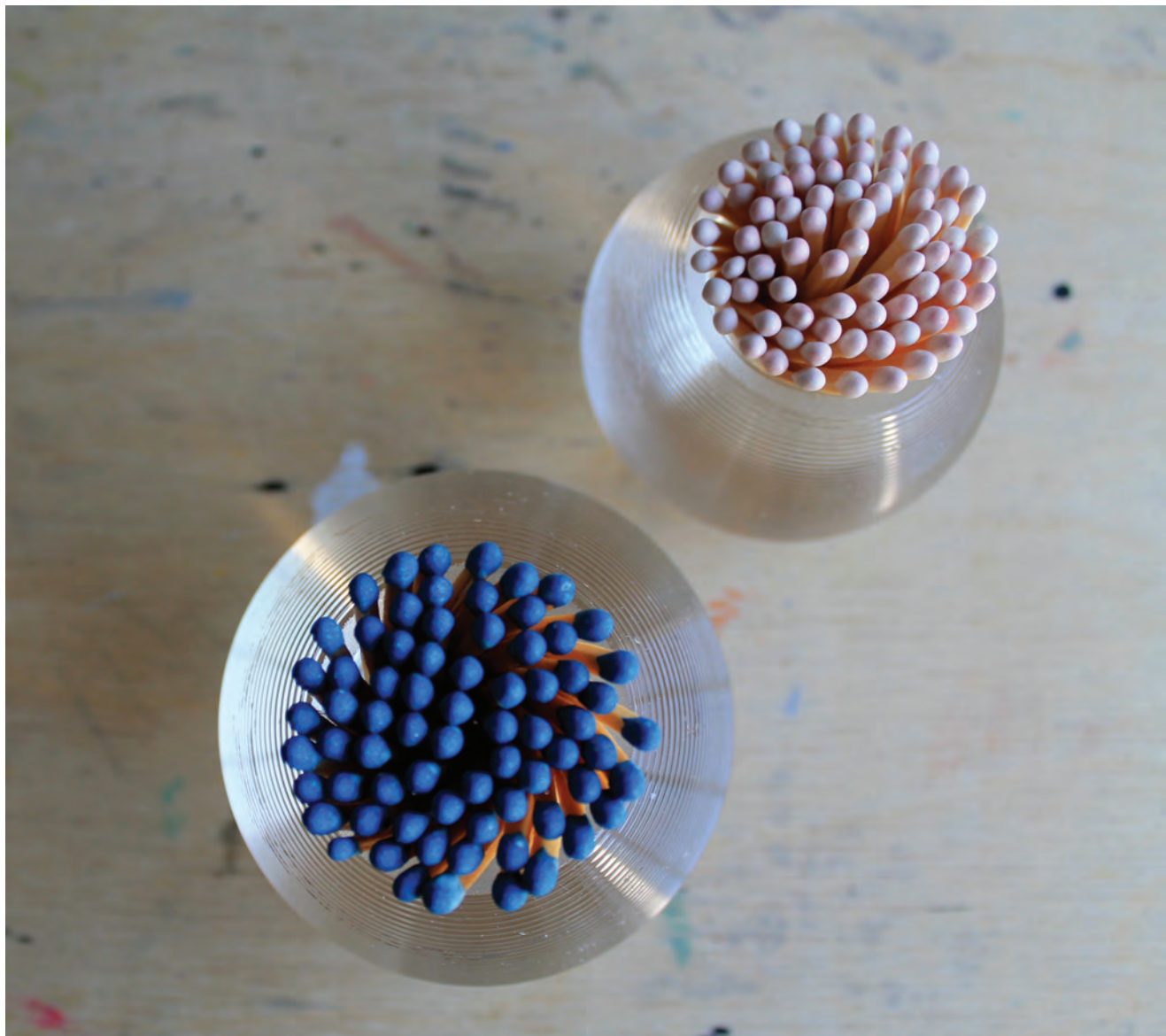
DEADLINE FOR EVOLVER 109

January and February 2019

FRIDAY 7 DECEMBER

# VISUAL ARTS

## November and December 2018



MEGAN CALVER

### MATERIALITY: PROVISIONAL STATES

Megan Calver, Philippa Lawrence and Sarah Bennett have been directly engaged with Hestercombe House and Gardens over three years and the resulting exhibition has developed from these experiences. *Materiality: Provisional States* runs from 10 November at Hestercombe Gallery and features exhibits using a range of media from photography, sculpture to drawing and text.

Megan Calver's new work is an iteration of her enquiry into expressions of taste and attitudes to perceived imperfections, first presented in a group show at Hestercombe in 2015. Her approach is process-led and for the past ten years she has focused her site-related investigations throughout the South West of England where collaborations with people and places have grown and taken hold.

After a deep study of the Hestercombe landscape, Philippa Lawrence offers works that ask us to perceive things we may have overlooked or not considered, tracing humankind's activity in managing an estate and nature. Philippa has exhibited widely both in the UK and internationally, including America, Japan, Czech Republic, Canada, Iceland and Australia.

Sarah Bennett's practice investigates institutional sites, both historical and contemporary in UK and international settings, employing a range of artistic research methods and material processes including: digital recording, facsimile object making, observational drawing, and embodied actions. She is Head of School of Art and Architecture at Kingston University, and chairs educational events in art schools, universities and arts organisations in Europe and the USA.

Collectively interested in issues related to labour and the management of landscape and nature, *Materiality: Provisional States* aims to examine and critique human and non-human centred activity found in Hestercombe's past and present. The exhibition stems from archival research as well as *Disclosures and Dialogues*, a series of dialogue sessions with artists, curators, historians, academics and garden practitioners.

**10 November - 24 February:** Hestercombe Gallery, CHEDDON FITZPAINE, Taunton, TA2 8LG. 11am - 4pm. £12.50. 01823 413923 / [hestercombe.com](http://hestercombe.com).



# VISUAL ARTS

## BATH SOCIETY OF ARTISTS: 'SOURCE'

**Until 3 November**

44AD Artspace, 4 Abbey Street, BATH.  
Monday - Saturday 11am - 6pm,  
Sunday 11am - 5pm. bsartists.co.uk.

"Celebrating the diverse practises of many nationally renowned artists."

## 'BRITISH WILDLIFE OPEN'

**Until 3 November**

Ace Arts, Market Place, SOMERTON,  
TA11 7NB. Tuesday - Saturday 10am -  
5pm. 01458 273008 / acearts.co.uk.

## GALLERY ARTISTS

**Until 4 November**

Tincton Gallery, The Old School  
House, TINCLETON, near Dorchester,  
DT2 8QR. Friday - Monday 10am -  
5pm. 01305 848909 /  
tinctongallery.com. "A mixed show by  
our artists. Exhibits will include new  
story boxes by Claire Newman-  
Williams."

## ANDREW ROBERTS: 'IF NOT NOW, THEN WHEN'

**Until 4 November**

Hubnub Gallery, Hubnub Centre,  
Whittox Lane, FROME, BA11 3BY.  
Monday - Friday 9am - 5pm, Saturday  
and Sunday 10am - 5pm.  
hubnubcentre.com. "Works which  
explore colour, light and texture, and  
depict the landscape in all its diversity."

## BOURNEMOUTH ARTS CLUB

**Until 5 November**

The Gallery Upstairs, Upton Country  
Park, POOLE, BH17 7BJ. Monday -  
Friday 10.30am - 3.45pm, Saturday and  
Sunday 10.30am - 4.30pm.  
thegalleryupstairs.org.uk. "Annual  
exhibition."

## BATH TEXTILE ARTISTS: 'ARCHIVAL MATERIAL'

**Until 6 November**

Bath Royal Literary and Scientific  
Institution, 16 - 18 Queen Square,  
BATH, BA1 2HN. Monday - Saturday  
10am - 4pm. 01225 312084 /  
bathtextileartists.com. "Textile artworks  
linked to and inspired by archival  
material held by BRLSI."

## ANTHONY ATWOOD AND EMILY VAN EESTEREN

**Until 6 November**

The Gallery, Shaftesbury Arts Centre,  
11 Bell Street, SHAFTESBURY, SP7  
8AR. 10am - 4pm. 01747 855243.  
"Anthony's paintings in watercolour  
and oils are inspired by his love of the  
British landscape. Emily's ceramics are  
raku fired, she focuses on texture using  
fossils, shells, ferns, and leaves."



'YOU'RE THE ONE'

## LEONARD GREEN: COMING HOME

Painter Leonard Green is returning to the Atkinson Gallery at Millfield School in Street for a solo exhibition in November. Originally from the North of England Green studied painting at undergraduate and post-graduate levels at Manchester University and then moved to Somerset to teach art at Millfield and curate a series of important exhibitions for the Atkinson Gallery. Following his retirement Green returned to painting full-time.

His work is characterised by exuberant colour. His vibrant canvases recognisably reveal his personal visual language of flowing squiggles, marks and shapes rooted in drawing and mark-making. His abstraction appears abundantly free but is controlled by a compositional rigour, which allows him to explore his innate expressionism. Artists such as Arshile Gorky and Bert Irvin spring to mind. Interestingly Green curated a Bert Irvin show at Millfield in 1996.

Currently working in acrylic on canvas his large paintings are joyous, almost riotous in their enjoyment of colour. He is passionate about Northern Soul Music and he worked semi-professionally as a DJ in the 1960s and 1970s when that genre of music dominated the night clubs of the Greater Manchester area. His titles are borrowed from that music. The movement and explosive energy of his work represents his response to the pulsing sounds and uninhibited dance moves that such music generated. Quoting Degas he draws attention to the connections between the abstract qualities in Degas' work and those in his own. There are subtle hints of accidental figuration in Green's paintings. Though unintentional, some of his abstract forms and marks can be read figuratively giving an added dimension to his essentially self-referential abstraction.

Fiona Robinson

**5 November - 8 December:** Atkinson Gallery, Millfield, STREET, BA16 0YD. Monday - Saturday 9.30am - 5pm. 01458 444322 / atkinsongallery.co.uk

**BLACKSWANGUILD**  
QUALITY • ORIGINALITY • MASTERY  
**CRAFT/ART WORKS**  
of the Black Swan Guild selectors  
**1-22 December 2018**  
Preview 30 Nov 6-8pm, all welcome  
SONJA KLINGER / SASHA WARDELL / CHRIS PIG  
HANS BORGONJON / GLADYS PAULUS / JULIA MANNING / CAROLYN GRIFFITHS / TOM MCEWAN

## Extremely Textiles

featuring: Desiree Goodall,  
Gill Hewitt, Julie Heaton,  
Angie Parker, Linda Row,  
Joy Merron, Kate Bond  
Julia Penrose, Sarah Truscott

**1-22 December 2018**  
Preview Fri 30 November 6-8pm,  
all welcome

galleries | studios | shop | cafe  
2 Bridge Street, Frome BA11 1BB  
01373 473980 | www.blackswan.org.uk

**BLACKSWANARTS**  
OPEN: Mon - Sat 10am-4pm  
and Independent Market Sundays  
Registered Charity No.292463



## JOHN LEACH GALLERY



### CHRISTMAS EXHIBITION

3 November - 5 February 2019

JAMIE CONDON paintings

JOANNE HORROBIN copper & enamel bowls

HOLLY WEBB jewellery

01458 250 324

Muchelney, Nr Langport TA10 0DW

[www.johnleachpottery.co.uk](http://www.johnleachpottery.co.uk)

## VISUAL ARTS



LUKE ELWES 'GANGA 7' (75 x 80 cm, 2018)

## CURRENTS

"Ways of seeing water. New paintings by Julian Bailey, Luke Elwes, Vanessa Gardiner, Janette Kerr with furniture by Petter Southall, ceramics and sculpture by leading artists and makers. *Currents* brings together the work of four eminent contemporary painters all of whom are drawn to paint water again and again, for the joy of it, the power and ferocity of it, the contemplative force of it and for its deep unknowable mysteries. For Janette Kerr water is deeply dynamic, whipped up by the wind and portrayed in energetic expressionist brush strokes. Vanessa Gardiner's water is often a well of opaque turquoise blue with geometrically divided areas of froth and shadow. Julian Bailey's joyous seas seem to sparkle and move with thick impasto paint and quick gestural brush strokes. Luke Elwes' *Ganga* paintings turn the surface of water into a shimmering meditation."

**Until 11 November:** Sladers Yard, WEST BAY, Bridport, DT6 4EL.

Monday - Saturday 10am - 4pm, Sunday and Bank Holiday 12noon - 4pm. [www.sladersyard.co.uk](http://www.sladersyard.co.uk).

### 'SECRET A5 ART SHOW'

**Until 6 November**

LT Gallery, 1 Orchard Street, WESTON-SUPER-MARE, BS23 1YA. Tuesday, Friday and Saturday 10am - 4pm, Sunday 12noon - 7pm. 07730 431726 / [ltgallery.com](http://ltgallery.com). "Open exhibition of anonymous A5 drawings as part of the international Big Draw event."

### DERWENT ART PRIZE

**Until 10 November**

Town Hall, Market Street, TROWBRIDGE, BA14 8EQ. Monday - Friday 10am - 4pm, Saturday 10am - 2pm. 01225 774306 / [townhallarts.co.uk](http://townhallarts.co.uk). "67 artworks which celebrate drawing in all its diversity, showcasing the very best 2D and 3D artworks created in pencil, coloured pencil, pastel, graphite and charcoal."

### DALLAS COLLINS: 'COOKING WITHOUT GAS'

**Until 10 November**

Pound Arts Centre, Pound Pill, CORSHAM, SN13 9HX. Monday - Saturday 10am - 6pm. 01249 701628 / [poundarts.org.uk](http://poundarts.org.uk). "Dallas Collins' intriguing sculptures blur the boundaries between science and art, and continuously oscillate between science fiction and fact in their endeavour to explore the idea of a post-apocalyptic space."



### 'DURAND IN DORSET'

**Until 10 November**

The Grain Gallery, South Street, SHERBORNE, DT9 3LU. 10am - 4pm. 01935 814208 / [thegraingallery.co.uk](http://thegraingallery.co.uk). "André Durand's much anticipated new exhibition of allegorical paintings." Above: 'L'Apres-midi d'un Faune in Cerne Abbas'

### 'OUR NAKED SKIN'

**Until 10 November**

Salisbury Arts Centre, Bedwin Street, SALISBURY, SP1 3UT. Tuesday - Saturday 10am - 3pm. [wiltshirecreative.co.uk](http://wiltshirecreative.co.uk). "This exhibition explores the 'skin' between the



evolvermagazine



# VISUAL ARTS

personal and public, desire and constraint, love and politics, age and visibility, and more."

## 'POLITICS AND PROTEST'

**Until 11 November**

CICCIC, Memorial Hall, Paul Street, TAUNTON, TA1 3PF. 12.30 - 5pm. 01823 337477. "Exhibition of dynamic posters from the Women's Liberation Movement (1978 - 2000). Calling women together to campaign, learn, protest and celebrate, the posters speak to us now of the burning issues of the time - many of which continue to reverberate today. The posters are inspiring and will also provoke debate: What was achieved? What is still to be done?"

## CAMILLA NOCK: 'THE DEAD SCRIBBLE ON WALLS'

**Until 17 November**

Allsop Gallery, Bridport Arts Centre, BRIDPORT, DT6 3NR. Tuesday - Saturday 10am - 4pm. 01308 424204 / bridport-arts.com. "Camilla Nock re-imagines a melancholic shadow cast by the First World War." See page 9.

## RICHARD ADAMS AND JOE LAWRENCE

**Until 17 November**

Hybrid Gallery, 51 High Street, HONITON, EX14 1PW. Tuesday - Saturday 10am - 5pm. 01404 43201 / hybrid-devon.co.uk. "Dwelling on the fruits of the sea, soil and riches from the work of bees, these uplifting images invite us to share the enjoyment of simple pleasures."

## CLIVE JEBBETT

**Until 17 November**

White Horse Business Centre, Unit 10, Hopton Road, DEVIZES, SN10 2HJ. Thursday, Friday and Saturday 11am - 4pm. 07852 945598.

## 'CHILDHOOD'

**Until 18 November**

Royal Albert Memorial Museum, Queen Street, EXETER, EX4 3RX. Tuesday - Saturday 10am - 5pm. 01392 265858 / rammuseum.org.uk.

## 'KABOOM! HONITON!'

**Until 21 November**

Boston Tea Party, Monkton House, 53 High Street, HONITON, EX14 1PW. Monday - Saturday 7am - 6pm, Sunday 8am - 6pm. rosspenwill.co.uk.

## 'JACK'S COUSIN'

**Until 22 November**

Boston Tea Party, Monkton House, 53 High Street, HONITON, EX14 1PW. Monday - Saturday 7am - 6pm, Sunday 8am - 6pm. kenevansprints.co.uk.



## KEVIN O'BRIEN

**26 November - 29 December:** The Rose Mill Gallery, Unit 1, Rose Mills Industrial Estate, ILMINSTER, TA19 9PS. Tuesday - Saturday 10am - 4.30pm. kevinobrien-art.com.

## 'MADE IN GLASTONBURY'

**Until 24 November**

Ilminster Arts Centre, The Meeting House, East Street, ILMINSTER, TA19 0AN. Monday - Friday 9.30am - 4.30pm, Saturday 9.30am - 2.30pm. 01460 54973 / themeetinghouse.org.uk. "Original art, craft and photography made in the Isle of Avalon by a group of artists inspired by their unique surroundings."

## 'HUMAN NATURE'

**Until 25 November**

The Bishop's Palace, Market Place, WELLS, BA5 2PD. 10am - 6pm. £8.95 / £7.95 / £3.35. 01749 988111 / bishopspalace.org.uk. "A new sculpture trail set in the stunning gardens of The Bishop's Palace, curated by Gallery Pangolin, with work from six different sculptors, celebrating the qualities that characterise and define humankind."



## CLIFFORD AND ROSEMARY ELLIS:

### 'MAKING ART MATTER'

**Until 25 November**

Victoria Art Gallery, Bridge Street, BATH, BA2 4AT. 10.30am - 5pm. £4.50. victoriagal.org.uk. "Husband and wife team Clifford and Rosemary Ellis designed bold, colourful posters and book jackets for London Transport, Shell and Collins books and taught at the influential Bath Academy of Art in Corsham. Catalogue available."

## 166 ANNUAL OPEN EXHIBITION

**Until 25 November**

Royal West of England Academy, Queen's Road, Clifton, BRISTOL, BS8 1PX. Tuesday - Saturday 10am - 5.30pm, Sunday 11am - 5pm. £7.95 / £6.75. rwa.org.uk. "Painting drawing, photography, sculpture, illustration, video and mixed media submissions by some of the most exciting artists from across the country and beyond."

## 'BINDING THE PAST TO THE PRESENT THROUGH REMEMBRANCE'

**Until 25 November**

Salisbury Cathedral, The Close, SALISBURY, SP1 2EJ. 9am - 5pm. 01722 555148. "Salisbury Cathedral is marking the centenary of the end of World War 1 with a special exhibition bringing together two of the most potent symbols of Remembrance - red poppies and puttees."



## PATTERNED LAND by SUSANNA LISLE

10 November - 13 January at The HUBnub Centre



Whittox Lane  
Frome BA11 3BY  
07712 523734  
info@hubnubcentre.com

## Alison Webber PHOTOGRAPHY



## OPEN STUDIO

Third Saturday of the month  
or by appointment

27 Monmouth Rd, Dorchester DT1 2DE



alisonwebberphotography.com

## Circa 5

## Perceptions

A multi-disciplinary exhibition  
including painting, textiles,  
print making and sculpture.

**21-27 November  
10-4**

Shaftesbury Art Centre,  
11 Bell Street, Shaftesbury,  
Dorset SP7 8AR 01747 855243  
www.shaftesburyartcentre.org.uk  
www.circa-5.com



## Clive Melbourne

clive.melbourne  
@btinternet.com

www.artistsandillustrators/  
clivemelbourne



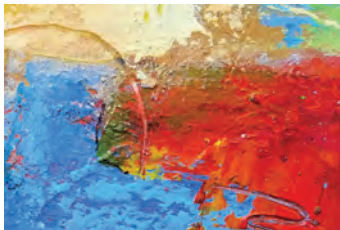


JANE MACEY

## CIRCA 5: PERCEPTIONS

"A multi-disciplinary exhibition including painting, print making, textiles and sculpture which aims to interrogate notions of time, dislocation, movement and connection, with responses to landscape, the figure and the nature of reality."

**21 - 27 November:** Shaftesbury Art Centre, 11 Bell Street, SHAFTESBURY, SP7 8AR. 10am - 4pm. 01747 854321 / circa-5.com / shaftesburyartcentre.org.uk.



HELEN NOCK AND SINCLAIR TAYLOR

**Until 27 November**

LT Gallery, 1 Orchard Street, WESTON-SUPER-MARE, BS23 1YA. Tuesday, Friday and Saturday 10am - 4pm, Sunday 12noon - 7pm. ltagallery.com. "Furniture and sculpture."

### 'THE ART OF SELF EXPRESSION'

**Until 1 December**

Somerset Rural Life Museum, Chilkwell Street, Glastonbury, BA6 8DB. 10am - 5pm. £6 / £4.95. 01458 831197. "An engaging look at the contemporary history of facial hair and tattoos, exploring how facial hair and tattoos have been influenced by wider changes in British society and culture."

### POOLE LEISURE PAINTERS: 'WINTER EXHIBITION'

**Until 3 December**

Mezzanine Gallery, Lighthouse, Poole's Centre for the Arts, Kingland Road, POOLE, BH5 1UG. Tuesday - Saturday 10am - 5pm. 01202 280000 / lighthouse.co.uk.

### ROBIN RICHARDSON: 'BOUNDLESS ENERGY'

**Until 3 December**

Top Floor Gallery, Lighthouse, Poole's Centre for the Arts, Kingland Road, POOLE, BH5 1UG. Tuesday - Saturday 10am - 5pm. 01202 280000 / lighthouse.co.uk.

### 'UNINTENDED CONSEQUENCES'

**Until 15 December**

Andrew Brownsword Gallery, The Edge, University of Bath, Claverton Down, BATH, BA2 7AY. Tuesday - Saturday 11am - 5pm (Wednesday until 7pm). 01225 386777 / edgearts.org. "An exhibition of two film works which reflect the complex, entangled nature of contemporary experience in a time

where world events are so volatile and turbulent that it's hard to predict what might happen next."

### 'ROOTED IN THE LANDSCAPE'

**Until 5 January**

Dorset County Hospital, Williams Avenue, DORCHESTER, DT1 2JY. 8am - 8pm. 01305 255144 / dchft.nhs.uk/about/arts. "A fresh new touring exhibition featuring works by artists such as Andy Goldsworthy, Marc Quinn, Keith Vaughan and Turner Prize-nominated Janice Kerbel."

### 'HOARDS: A HIDDEN HISTORY OF ANCIENT BRITAIN'

**Until 5 January**

The Salisbury Museum, The King's House, 65 The Close, SALISBURY, SP1 2EN. Monday - Saturday 10am - 5pm. £8 / £4. 01722 332151 / salisburymuseum.org.uk. "Discover fabulous buried treasure in this British Museum touring exhibition, which focuses on hoarding in prehistoric and Roman Britain. Find out why ancient people put precious objects in the ground and why they did not retrieve them."

### NAOMI HART: 'SOME FAR OFF MAGIC LAND'

**Until 7 January**

Royal Albert Memorial Museum, Queen Street, EXETER, EX4 3RX. Tuesday - Sunday 10am - 5pm. £5 / £3. 01392 265858 / www.rammuseum.org.uk. "From the forests of France to the deserts of Australia, this exhibition conveys a sense of place and the mystery that we can find there."



### EMILY ENDEAN: 'SUNRISE TO SUNSET'

**Until 13 January**

Café Gallery, Russell-Cotes Art Gallery and Museum, BOURNEMOUTH, BH1 3AA. Tuesday - Sunday 10am - 5pm. £7.50. russellcotes.com. "Emily Endean, is fascinated in the beauty, light and colour of the natural world. She can be found from sunrise to sunset, camera in hand, chasing the light and weather at its best."

## SUBSCRIBE TO EVOLVER

£24 (6 issues starting with EVOLVER 109 (January / February 2019 issue))

NAME

ADDRESS

POSTCODE

Send cheque (payable to 'Evolver Media') to:  
EVOLVER MEDIA, 8 BUCKLAND ROAD, PEN MILL TRADING ESTATE,  
YEovil, SOMERSET BA21 5EA

ILMINSTER

arts centre  
AT THE MEETING HOUSE

DISCOVER SOUTH  
SOMERSET'S MOST VIBRANT  
ARTS VENUE!

**MADE IN GLASTONBURY** Mon 29 October - Sat 24 November  
Paintings, textiles, furniture and photography inspired by the Isle of Avalon  
**CHRISTMAS COLLECTION** Mon 26 November - Fri 21 December  
Unique hand-crafted gifts by West Country makers

## FREE EVOLVER LISTINGS

Exhibition and performance listings should be emailed to:  
listings@evolver.org.uk

Please supply information (in upper and lower case) in the following order:  
Event. Date(s). Venue, address (including postcode). Times. Admission fee (if any). Contact number / website. Up to 30 words about the event.



In 2003 Camilla Nock installed her exhibition *The Labyrinth and The Rose* in Gloucester Cathedral. The paintings explored minimalism in painting and the use of sequential code to figure Messiaen's *Quartet for the end of time* which he composed whilst in a concentration camp. The research for the project was funded by the Arts Council, following her award for painting, in the Year of the Artist 2001-02. Although Nock travelled extensively as a child her roots are in Gloucestershire. Standing in the awe-inspiring space of the Cathedral it came to her that this was the last place her grandfather stood as a whole man before the effects of mustard gas in the First World War destroyed his life.

This moment of revelation led to Camilla's exploration of the First World War through the poetry of Ivor Gurney, Wilfred Owen and Edmund Blunden. The project became the subject of her research for her doctorate at Plymouth University completed in 2016. The search for closure in her enduring grief for her grandfather and for all the young men who fell in that appalling conflict, has come near to destroying her peace of mind.

Nock's canvases are dark like her subject matter but there is an occasional lick of yellow. After her mother died she found a yellow suitcase – mustard yellow - which contained her grandfather's wallet. This suitcase became iconic: the symbol of her personal connection with the subject of her research. Another poignant anecdote, which relates to her use of the colour, is a recollection by Wilfred Owen as young soldier from the trenches as he was about to go over the top. He remembered or visualized running to the top of a hill as a child with his brother and looking down saw that his boots were covered in buttercup pollen.

Camilla Nock's studio overlooks the Neroche Forest in Devon from whose farming community young men went to the Front. She haunted the forest for two years filling dozens of sketchbooks in an attempt to connect with the now silent sounds of these dead men. The drawings in her 'Black Books' using mud, charcoal and found materials sought to rationalise the birdsong and benign leafy greenness of the present with the cataclysm of the past. She feels that 'there is no redemption', yet it is extraordinary that out of such unrelentingly dark subject matter these beautiful images emerge.

In making the works exploring this tragic moment in history Camilla has frequently destroyed her paintings. This catharsis was not entirely successful since it is almost impossible to blot out the terrible pictures

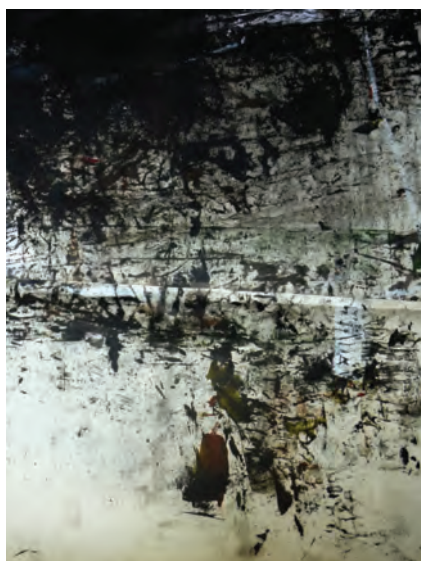


'THE DEMONIC 2'

## CAMILLA NOCK

associated with war. In response to Edmund Blunden's poetry mourning the loss of the beautiful countryside of France and Belgium she painted a huge Romantic style landscape. This she systematically damaged with tractor paint and industrial paint sprays so that the work replicated the destruction seen by young soldiers.

Line is a crucial mark-making element of Nock's work. Frequently vertical, it shifts to a yellow diagonal in a very beautiful double page spread in one of her *Black Books*. In the penultimate painting of the series the line becomes horizontal - trees and men no longer upright. The final painting is a whited out canvas scattered with broken disconnected slashed lines signifying 'no- thing', a nihilistic nothingness.



'GROUND / POETRY OF WAR'

Nock's most recent work has moved sideways rather than away from WW1 as a motif. However line stays centre stage. Exploring the war through the words of writer and artist David Jones in his vivid poem memoir *In Parenthesis*, oblique lines create a barrier between the painted surface and the viewer.

There are many references to mythology in Nock's paintings including the role of carrion crows as harbingers of death and the raven as the releaser of the soul of the Celtic warrior. The central panel of her large triptych *The Black Rooks About The Trees* (a line from an Ivor Gurney poem) consists of thousands of crow's feathers collected in the UK and Germany. The black feathers are the antithesis of the white feathers handed out by women to men who were not in uniform regardless of the reason.

Not only have images invaded Camilla Nock's headspace, words have too. Lines from the poets who wrote about their first-hand experiences of the war have become the equivalent of 'ear-worms' that she finds inescapably repeating themselves over and over again. She writes them repeatedly on her canvases obliterating them and re writing them so that they become a mantra.

Fiona Robinson

### 'THE DEAD SCRIBBLE ON WALLS'

**Until 17 November:** Allsop Gallery, Bridport Arts Centre, South Street, BRIDPORT, DT6 3NR. Tuesday - Saturday 10am - 4pm. 01308 424204 / [bridport-arts.com](http://bridport-arts.com)



kevinobrien-art.com



**PAINTINGS KEVIN O'BRIEN**

**THE ROSE MILL GALLERY**  
Unit 1 Rose Mills Industrial Estate  
Ilminster TA19 9PS

**26 November – 29 December**  
**Tuesday – Saturday**  
**10.00 – 16.30**

member of Wessex Contemporary Arts  
wesca.co.uk



## VISUAL ARTS



PERCY LIZZARD 'YELLOW BIRDS'

## NEW WORK BY SIX LOCAL ARTISTS

"Work by Percy Lizzard, Gilly Hopson, Yve Sturgeon, Mary Quinton-Edwards, Patricia Burns and Maggie Wyman."

**7 - 13 November:** Dairy House Antiques and Interiors, Station Road, SEMLEY, near Shaftesbury, SP7 9AN. 10am - 5pm. 01747 853317.



**EXHIBIT A**

Artists and photographers are invited to submit work for consideration as next issue's page 3 **EXHIBIT A** by emailing images to: [simon@evolver.org.uk](mailto:simon@evolver.org.uk)

**Young Gallery**

MARKET PLACE, SALISBURY

**CONVERSATIONS ON ART**

**Wednesday 28 November**  
**PAINTING AND MEDITATION**  
**Val Stephenson**  
7.00 - 8.30pm, £5 inc refreshments  
Exhibition viewable from 6.30pm:  
Arabella Dorman

**Wednesday 12 December**  
**KATHE KOLLWITZ (d 1945)**  
**Jasper Humphreys**  
7.00 - 8.30pm, £5 inc refreshments  
Exhibition viewable from 6.30pm:  
Steve Pratt - Fate of Place

For tickets email  
[info@younggallerysalisbury.co.uk](mailto:info@younggallerysalisbury.co.uk)



**Contemporary Interiors in Wood**

5 rooms full of unique wood work from over 200 craftsmen working in the UK.

Ranging from kitchenware to one-off jewellery boxes and furniture.

Coffee shop and small children's play area.

Rodden Row, Abbotsbury, DT3 4JL  
[www.danselgallery.co.uk](http://www.danselgallery.co.uk)

01305 871515  
Open 10am - 5pm every day



'BATH OPEN STUDIOS AT THE RUH' Until 17 January

Central Gallery, Royal United Hospitals Bath, Combe Park, BATH, BA1 3NG. Monday - Sunday 8am - 8pm. 01225 824987 / [artatruh.org](http://artatruh.org). "Artists and craft makers from the five Bath Art Trails show an eclectic selection of works demonstrating creative variety and expertise from across the city."

Above: Sarah Targett 'The Fisher Kings'

### 'SAND, LAND AND SEA'

**1 - 25 November**  
Purbeck New Wave Gallery, 25 Commercial Road, SWANAGE, BH19 1DF. Tuesday - Sunday 10am - 5pm. 07434 814384 / [purbecknewwave.co.uk](http://purbecknewwave.co.uk).

### 'COLLECTION POINT'

**1 November - 23 December**  
Kobi & Teal, 57 Catherine Street, FROME, BA11 1DA. Tuesday - Saturday 10am - 4.30pm. 07737 367419 / [kobiandteal.co.uk](http://kobiandteal.co.uk). "A diverse selection of work spanning contemporary art, craft and design. Featuring 20 artists and designers, this exhibition promises a rich and engaging experience."

### 'DORSET ARTISTS'

**2 - 28 November**  
The Courtyard Gallery, The Town Mill, Mill Lane, LYME REGIS, DT7 3PU. 10.30am - 4.30pm. [townmillarts.co.uk](http://townmillarts.co.uk). "A showcase of artwork created by Dorset-based artists, each with a distinctive vision of the county and its coastal scenes, colours, textures and landscapes."

### 'CHINA THROUGH THE LENS OF JOHN THOMSON, (1868 -1872)'

**2 November - 2 June**  
Russell-Cotes Art Gallery and Museum, BOURNEMOUTH, BH1 3AA. Tuesday - Sunday 10am - 5pm. £7.50. 01202 451858 / [russellcotes.com](http://russellcotes.com). "Stunning images of China in the 1860-70s taken by legendary photographer, John Thomson. From princes to foundlings, Manchu brides to street gamblers, his subjects are depicted with the utmost depth and aesthetic quality."

### SALLY WHELAN: 'I'VE FALLEN SO FAR, FOR THE PEOPLE YOU ARE'

**2 - 30 November**  
The Ropewalk, Nelsons Parade, BRISTOL, BS3 4JA. Tuesday - Sunday 12noon - 11pm. 01179 635124 / [ropewalkbristol.co.uk](http://ropewalkbristol.co.uk). "Figurative oil paintings with a strong narrative and bold composition."



# VISUAL ARTS

## ALICE MUMFORD

**2 - 30 November**

David Simon Contemporary, 3 - 4 Bartlett Street, BATH, BA1 2QZ. Monday - Saturday 10am - 6pm (Closed Wednesday and Sunday). 01225 460189. "Twenty-four paintings, featuring interiors and still-lives caught in Cornish light. Mumford was awarded this exhibition as winner of the David Simon Contemporary Prize at RWA Open Exhibition 2017."

## MIXED WINTER EXHIBITION

**2 - 30 November**

David Simon Contemporary, 3 - 4 Bartlett Street, BATH, BA1 2QZ. Monday - Saturday 10am - 6pm (Closed Wednesday and Sunday). [davidsimoncontemporary.com](http://davidsimoncontemporary.com).

"Paintings, original prints, ceramics and sculpture by the gallery's regular artists, as well as new faces including Hugo Grenville."

## 'MAP 2018'

**2 November - 5 January**

Main Gallery, Lighthouse, Kingland Road, POOLE, BH15 1UG. Tuesday - Saturday 10am - 5pm. 01202 280000 / [lighthousepoole.co.uk](http://lighthousepoole.co.uk). "Second year BA (Hons) Architecture students work on linking closely to Poole's industrial past, possible future, and the ethos of AUB's maker culture."



## ANDY WAITE

**5 November - 1 December**

Axle Arts, Leighton Road, BATH, BA1 4NF. Monday - Friday 10am - 12noon. 01225 461230 / [axlearts.com](http://axlearts.com).

"Landscape and figurative painter Andy Waite abstracts terrain and inspirational cloudscapes into expressive studies of colour and form."

Above: Andy Waite 'Moth Wing Sky' (Oil on board, 30 x 30 cm)



AMY J DRUCKER 'AIR RAID SHELTER' (1916)

## WW1: THE RUSSELL-COTES REMEMBERS

"Marking the centenary of the end of World War 1, this selection of military memorabilia, propaganda, cartoons, artwork and artefacts reflects on the impact of this world-changing event."

**Until 18 November:** The Print Room, Russell-Cotes Art Gallery and Museum, BOURNEMOUTH, BH1 3AA. Tuesday - Sunday 10am - 5pm. £7.50. 01202 451858 / [russellcotes.com](http://russellcotes.com).

## JEANNETTE HAYES

**9 November - 15 December**

Artwave West, MORCOMBELAKE, DT6 6DY. Wednesday - Saturday 10am - 4pm. 01297 489746 / [artwavewest.com](http://artwavewest.com).

"A striking exhibition featuring the President of the Pastel Society, Jeannette Hayes, whose work is alive with a dynamic, expressive energy."

## THE BEEHIVE CRAFT FAIR

**10 November**

The Beehive, Dowell Street, Honiton, EX14 1LZ. 10am - 3pm. 01404 384050 / [beehivehoniton.co.uk](http://beehivehoniton.co.uk). "Over 40 exhibitors on both floors of The Beehive displaying a wide variety of crafts from across the south-west."

## JON ENGLAND: 'A CENTURY OF SILENCE'

**10 - 24 November**

ACE Arts, Market Place, SOMERTON, TA11 7NB. Tuesday - Saturday 10am - 5pm. 01458 273008 / [acearts.co.uk](http://acearts.co.uk).

"Jon England works in a range of media exploring memorial, archive and landscape relating to conflict that can no longer be 'remembered' or even remotely imagined."

## 'ART IN THE MUSEUM'

**10 November - 1 December**

Crewkerne & District Museum & Heritage Centre, Market Square, CREWKERNE, TA18 7LP. Monday - Saturday 11am - 2pm. [crewkernemuseum.co.uk](http://crewkernemuseum.co.uk). "A range of

beautiful arts and crafts displayed in an historic building. Prices to suit all pockets. High standard of work, feast for the eyes."

## ARABELLA DORMAN: 'STATELESS'

**10 November - 29 December**

Young Gallery, Market Square, SALISBURY, BL1 1BL. 10am - 4pm. 07973 770942 / [younggalleriesalisbury.co.uk](http://younggalleriesalisbury.co.uk).

"Arabella Dorman focuses on the consequences of war - and especially on repercussions for civilians. She has worked in Iraq and Afghanistan and has raised funds for refugees."

**Foundation Degree  
Contemporary  
Fine Art Practice**

CREATIVE & VISUAL ARTS  
[www.weymouth.ac.uk](http://www.weymouth.ac.uk)

**WEYMOUTH  
COLLEGE**

IN PARTNERSHIP WITH

**UNIVERSITY OF  
PLYMOUTH**

**Foundation Degree  
Contemporary  
Photography Practice**

**APPLY  
NOW  
TO  
STUDY**



# VISUAL ARTS

## 'PATTERNED LAND'

**10 November - 13 January**

Hubnub Centre, Whittox Lane, FROME, BA11 3BY. Tuesday - Friday 9am - 5pm, Saturday and Sunday 10am - 5pm. 07712 523734 / hubnubcentre.com.

"Susanna Lisle's work combines both form, colour and texture with geometric pattern and space. Recently inspired by Somerset gardens and seasonal landscape combining the repeating pattern of hexagons echoed in flowers and seed heads."

## 'REMEMBRANCE'

**12 November - 25 January**

Chippenham Museum, 9 - 10 Market Place, CHIPPENHAM, SN15 3HF. 10am - 4pm. 01249 705020. "Chippenham Museum is proud to host Chippenham Town Council's Commemorative Tapestry Project, which honours the sacrifices and actions of the people of Chippenham during the First World War. Featuring artwork from the town's primary and secondary schools and local artist Fi Redmond, as well as community groups and individuals, the exhibition explores how the town both supported and commemorated those who fought in the Great War."

## 'BEST OF THE SOUTH WEST 2018'

**15 November - 5 January**

Town Hall, Market Street, TROWBRIDGE, BA14 8EQ. Monday - Friday 10am - 4pm, Saturday 10am - 2pm. townhallarts.co.uk. "A selection of work by talented artists who have graduated from their BA degrees this year. Outstanding contemporary work by emerging artists."

## YOUNG GALLERY MEMBERS GROUP

**17 November**

Young Gallery, Market Square, SALISBURY, BL1 1BL. 10am - 4pm. younggallerysalisbury.co.uk.

## ALISON WEBBER: OPEN STUDIO

**17 November**

27 Monmouth Road, DORCHESTER, DT1 2DE. 10am - 4pm. 01305 756030 / alisonwebberphotography.com. "Open studio exhibiting and selling a selection of work by Dorset photographer, Alison Webber LRPS, including mounted and framed prints together with a wide selection of greetings cards."

## CYRIL WOOD COURT ALLSORTS

**17 - 27 November**

Cyril Wood Court, 89 West Street, BERE REGIS, BH20 7HH. 10am - 4pm. 07789 026546. "An eclectic mix of pottery, jewellery, paintings and much more. All original."



'GATEHOUSE' (2018)

## NICK CUDWORTH: BATH NIGHT PAINTINGS

Nick is well known for his portraits of celebrities and for his paintings of Bath street scenes, meticulously executed in a style similar to that of old master painters such as Vermeer.

For this exhibition he presents over twenty of his stunning Bath night paintings in the form of giclée prints on stretched canvas, all of which will be for sale.

The artist's brilliant eye for the effect of light on colour ensures visitors will want to explore the city's beautiful buildings after dark.

**1 December - 17 February:** Victoria Art Gallery, Pulteney Bridge, BATH, BA2 4AT. 10.30am - 5pm. £4.50 / £4. 01225 477233 / victoriagal.org.uk.

## 'AFTER EIGHTIES'

**17 November - 20 January**

Sladers Yard, West Bay Road, WEST BAY, Bridport, DT6 4EL. Monday - Saturday 10am - 4.30pm, Sunday 12noon - 4.30pm. 01308 459511 / sladersyard.co.uk. "Paintings by Fred Cuming, Robin Rae and Alfred Stockham, with pottery by Richard Batterham. Craft, gifts, art books, accessories and furniture by leading artists and makers."

## NEIL KENDALL: 'GARDEN OF THE GODS'

**21 November - 1 December**

Pound Arts Centre, Pound Pill, CORSHAM, SN13 9HX. Monday - Saturday 10am - 6pm. 01249 701628 / poundarts.org.uk. "2018 National Vintage Photographer of the Year Neil Kendall shows a collection of his stunning vintage portraits and costumes. These glamorous images are inspired by his love of Hollywood."

## 'ANIMALS IN MIND'

**22 - 28 November**

The Malthouse Gallery, The Town Mill, Mill Lane, LYME REGIS, DT7 3PU. 10.30am - 4.30pm. townmillarts.co.uk.



## 'NAUGHTY COOL'

**23 - 25 November**

The Totterdown Centre, 142 Wells Road, BRISTOL, BS4 2AG. 11am - 6pm. 07793 239376. "Sculpture, painting and installation with nautical references by Filthy Luker, Rowdy and special guests."

## CONNECTIONS: 'ANNUAL EXHIBITION'

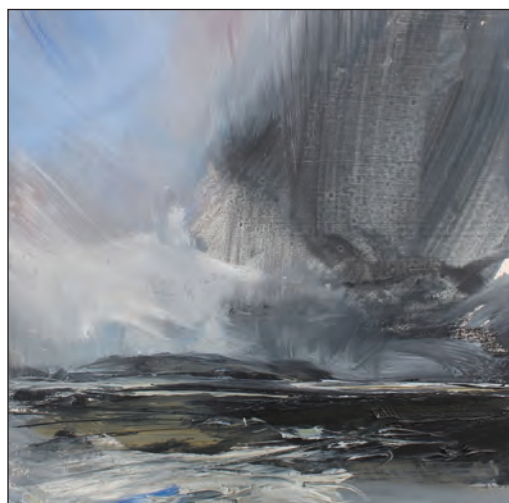
**24 November - 1 December**

Village Hall, Long Load, TA10 9JX. 10am - 4pm. 01985 248350. "Embroidery and textiles."

## GORDANO TEXTILE ARTISTS

**24 November - 2 December**

65 High Street, NAILSEA, BS48 1AB. 10am - 4pm. 01179 858439 / gordanotextileartists.co.uk. "Contemporary textile art."



**currents:** until 11 November  
Julian Bailey Vanessa Gardiner  
Luke Elwes Janette Kerr RSA Hon

**After Eighties:** Fred Cuming RA  
Robin Rae Alfred Stockham RWA  
Richard Batterham 17 November  
Left: Janette Kerr RSA Hon Right: Fred Cuming RA

Petter Southall furniture

**CAFÉ SLADERS**  
for breakfast, lunch and tea!

**SLADERS YARD**  
Contemporary Art, Furniture & Craft Gallery  
Open every day 10am - 4.30pm  
West Bay DT6 4EL 01308 459511 sladersyard.co.uk





## VISUAL ARTS



ANGELA CLEGG

### SON & MOTHER

"Benjamin and Angela Clegg showcase their vibrant abstract landscapes."

**29 November - 5 December:** The Malthouse Gallery, The Town Mill, Mill Lane, LYME REGIS, DT7 3PU. 10.30am - 4.30pm. [townmillarts.co.uk](http://townmillarts.co.uk).

#### PHOTOGRAPHY EXHIBITION

**26 November - 21 December**  
Ilminster Arts Centre, The Meeting House, East Street, ILMINSTER, TA19 0AN. Monday - Friday 9.30am - 4.30pm, Saturday 9.30am - 2.30pm. [themeetinghouse.org.uk](http://themeetinghouse.org.uk). "Photographs by the prizewinners of this year's Open Photographic competition."

#### 'HOMEWARD BOUND'

**26 November - 6 January**  
Purbeck New Wave Gallery, 25 Commercial Road, SWANAGE, BH19 1DF. Tuesday - Sunday 10am - 5pm. 07434 814384 / [purbecknewwave.co.uk](http://purbecknewwave.co.uk).

#### DANIEL BRYCE

**29 November - 18 December**  
LT Gallery, 1 Orchard Street, WESTON-SUPER-MARE, BS23 1YA. Tuesday, Friday and Saturday 10am - 4pm, Sunday 12noon - 7pm. 07730 431726 / [ltgallery.com](http://ltgallery.com). "Intricate mixed media using patterns from the natural world as source material."

#### 'CELEBRATING THE ORDINARY'

**1 - 8 December**  
Aurea, 15 Kings Road, Clifton Village, BRISTOL, BS1 4AB. Monday - Saturday 10am - 5pm. 0117 929 0425. "Hand built and decorated functional ceramics by Morag MacInnes."

#### 'DIG MY EARTH'

**1 - 24 December**  
ACE Arts, Market Place, SOMERTON, TA11 7NB. Tuesday - Saturday 10am - 5pm. [acearts.co.uk](http://acearts.co.uk). "Renowned potters Jackie Duncan, Sven Bayer, Mike Dodd, John Leach, Mark Melbourne, Nick Rees, Tim Hurn and Clive Bowen, who work with wood-firing techniques, produce diverse pieces including bottles, jugs, tea bowls, decorated with wood ash glazed surfaces."

#### 'ARTISANS ON THE BEACH'

**1 - 30 December**  
Sea Front, SWANAGE, BH19 1LB. Friday, Saturday and Sunday 10.30am - 4pm. 07946 000025. "Local, unique hand-crafted items presented for sale by the crafters themselves from the Swanage Beach Huts. Weather dependant."



#### 'ON PAPER'

**1 December - 17 February**  
Victoria Art Gallery, Pulteney Bridge, BATH, BA2 4AT. 10.30am - 5pm. £4.50 / £4. 01225 477233 / [victoriagal.org.uk](http://victoriagal.org.uk). "All the artworks in this fascinating exhibition are made from paper used as a material in its own right. Among the leading artists featured are Damien Hirst (above), Roy Lichtenstein, Bridget Riley, Gillian Ayres and Eduardo Paolozzi."

#### OPEN DAY AND SALE 2018

**2 December**  
Shakspeare Glass, Westover, LANGPORT, TA10 9RB. 11am - 4pm. 01458 252477 / [shakspeareglass.co.uk](http://shakspeareglass.co.uk). "Annual sale of slight seconds, odds and ends and cupboard clear out."

## Tincleton Gallery

contemporary fine art in Dorset

### Mixed Winter show

### gallery artists

Fri 9th Nov - Wed 2nd Jan



"Autumnal Colours" by Philippa Headley

The Old School House, Tincleton, near Dorchester, DT2 8QR  
Friday / Saturday / Sunday / Monday • 10am - 5pm  
01305 848 909 • [www.tincletongallery.com](http://www.tincletongallery.com)

## RWA

### 166 Annual Open Exhibition

7 Oct - 25 Nov 2018

Hundreds of works of contemporary art by renowned artists and new talent

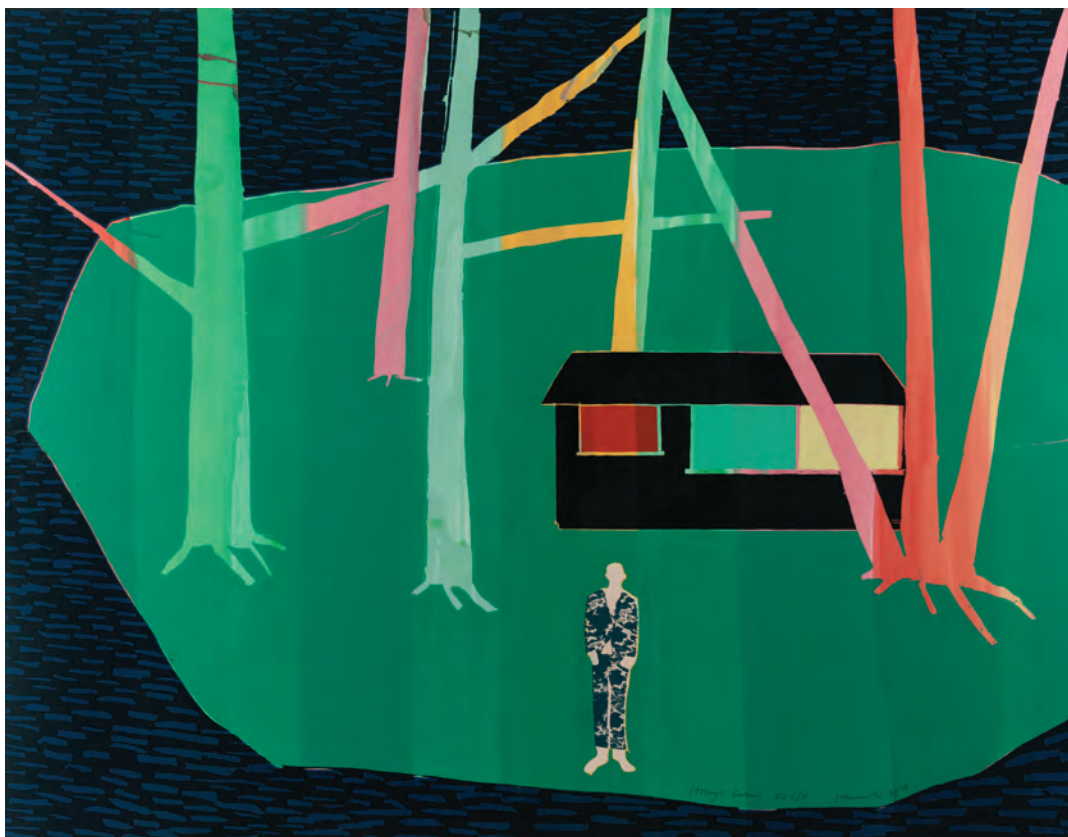


[rwa.org.uk](http://rwa.org.uk)

Royal West of  
England Academy

Smith &  
Williamson





'HENRY'S CABIN, WALDRON POND' (Woodcut, 2018)

## TOM HAMMICK: ISLAND LIFE

"Tom Hammick's atmospheric landscape prints emerge from cut wood. His images are metaphors for the human condition; reflecting states of mind, transience, fragility and awe. He is inspired by the British Romantic tradition and Eastern culture. Hammick has an international reputation for his stunning colourful printmaking."

**17 - 22 December:** Rabley Drawing Centre, MILDENHALL, Marlborough, SN8 2LW. Thursday - Saturday 10am - 4pm. 01672 511999 / rableydrawingcentre.com.

### 'MORE FIBRE YARNS'

**3 December - 5 January**

The Bibbern Gallery, The Exchange, Old Market Hill, Sturminster Newton, DT10 1FH. 9am - 6pm. 01258 472041 / stur-exchange.co.uk.

### WINTER SHOW

**3 December - 19 January**

Axle Arts, Leighton Road, BATH, BA1 4NF. Monday - Friday 10am - 12noon. 01225 461230. "Paintings, prints, ceramics and sculpture. Artists include Lynne Cartledge, Dorothy Brook, Andy Waite, Frans Wesselman, and Iryna Yermolova."

### POUND ANNUAL OPEN

**8 - 23 December**

Pound Arts Centre, Pound Pill, CORSHAM, SN13 9HX. Monday - Saturday 10am - 6pm. 01249 701628 / poundarts.org.uk. "The Pound's eleventh annual Open gives artists of all genres and mediums the chance to submit work for the biggest exhibition of the year."

### 'ALBERT IRVIN AND ABSTRACT EXPRESSIONISM'

**8 December - 3 March**

Royal West of England Academy, Queens Road, BRISTOL, BS8 1PX.

Tuesday - Saturday 10am - 5.30pm, Sunday 11am - 5pm. £7.95 / £6.75. [www.rwa.org.uk](http://www.rwa.org.uk). "This major exhibition will draw new links between British art and American Abstract Expressionism, whilst also providing a unique overview of the career of one of Britain's most important post-war artists."

### STEVE PRATT

**11 - 29 December**

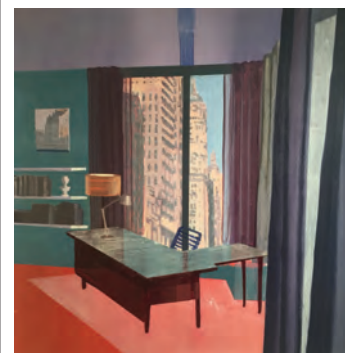
Young Gallery, Market Square, SALISBURY, BL1 1BL. 10am - 4pm. [younggalleriesalisbury.co.uk](http://younggalleriesalisbury.co.uk). "Former UK serviceman Steve Pratt is an artist and psychotherapist. His work focuses on touch, and how it played a part in the tragedies of war across continents."



### ALISON WEBBER: OPEN STUDIO

**15 December**

27 Monmouth Road, DORCHESTER, DT1 2DE. 10am - 4pm. 01305 756030 / [alisonwebberphotography.com](http://alisonwebberphotography.com). See 17 November.



### 'PROLOGUE'

**15 - 20 December**

44AD Artspace, 4 Abbey Street, Bath, BA1 1NN. 07753 378325 / [thomaspencerfineart.co.uk](http://thomaspencerfineart.co.uk).

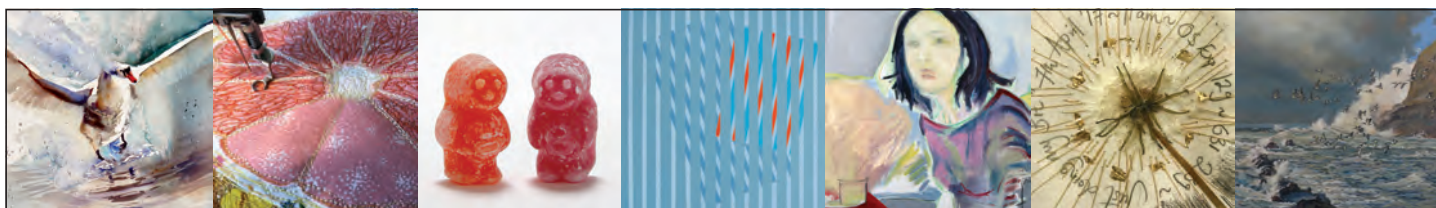
"Contemporary art show exhibiting four young rising British artists: Ben Reader, Miranda Carins, Jess Power and Luke Samuel (above)."

### DAVID RINGSSELL: 'NEW VIEWS ON FAMILIAR PLACES'

**1 January - 31 March**

West Corridor, Royal United Hospital, Combe Park, BATH, BA1 3NG. 01225 469127 / [real-images.com](http://real-images.com). "Recent paintings of Bath."

PULL-OUT SUPPLEMENT



Showcasing contemporary craft and art alongside an inspiring exhibition programme of work by local and national artists



Market Place, Somerton, Somerset TA11 7LX • 01458 273008 • [www.acearts.co.uk](http://www.acearts.co.uk)



# WESSEX WINTER GUIDE 2018



SHERRIE-LEIGH JONES 'FOOT OF THE MOUNTAIN' (KOBI AND TEAL)





## VISUAL ARTS

### 'COMING BACK FOR CHRISTMAS'

**1 November - 24 December**

The Creative Gallery, St John's Hill, WAREHAM, BH20 4NB. Monday - Saturday 10am - 5pm (4pm on 24 December). 01929 551700. "See and enjoy the creations of all our 2018 guest artist / makers. Ceramics, felt, glass, metal, mosaics, prints and wood - gifts to suit all tastes and pockets."

### WINTER ART FAIR

**2 - 21 November**

The Malthouse Gallery, The Town Mill, Mill Lane, LYME REGIS, DT7 3PU. 10.30am - 4.30pm. townmillarts.co.uk.



### CHRISTMAS EXHIBITION

**3 November - 5 February**

John Leach Gallery, Muchelney Pottery, Muchelney, near Langport, TA10 0DW. Monday - Saturday 9am - 1pm, 2 - 5pm. johnleachpottery.co.uk. "New work by Jamie Condon (paintings), Joanne Horrobin (copper and enamel dishes), and Holly Webb (handmade silver jewellery)."



CAROLINE LIDDINGTON 'HOT SAND 134'

## ART: CAUSE AND EFFECT

"This beautiful, affordable exhibition, curated by Dorset Visual Arts, will showcase an eclectic mix of paintings, prints, ceramics, photography, textiles, sculpture and more, bringing members' contemporary work to the Dorset public. DVA artists and makers work in a variety of different media, often drawing on their beautiful county for ideas and inspiration. There will be something for everyone in this one off show, and no item will cost more than £125, enabling you to buy a unique and personal Christmas gift. This exhibition has the additional twist of having a percentage of the label price go to our artists' nominated charities. So as well as someone receiving a beautiful handmade art or craft piece for Christmas, this is a practical way of benefiting those in need."

**24 November - 22 December:** Allsop Gallery, Bridport Arts Centre, South Street, BRIDPORT, DT6 3NR. Tuesday - Saturday 10am - 4pm. 01308 424204 / bridport-arts.com.



### 'WINTER MIXED EXHIBITION'

**9 November - 2 January**

Tincleton Gallery, The Old School House, TINCLETON, Dorchester, DT2 8QR. Friday - Monday 10am - 5pm. 01305 848909 / tincletongallery.com.

"Mixed show by our gallery artists."

Above: Philippa Headley 'Summer's Heightened Colours'



### 'HEART, HEAD AND HAND'

**14 November - 5 January**

Salisbury Arts Centre, Bedwin Street, SALISBURY, SP1 3UT. Monday - Saturday 10am - 3pm. 01722 320333 / wiltshirecreative.co.uk.

"A contemporary craft exhibition showcasing work of members of Hampshire and Berkshire Guild of Craftsmen with guests. This is a selling exhibition and an excellent opportunity to buy some of the finest work created in the south."

Above: Julie Ayton

### CHRISTMAS WONDERLAND MARKET

**18 November**

Lighthouse, Kingland Road, POOLE, BH15 1UG. 11am - 4pm. 01202 280000. "Over 120 stands bearing seasonal goods to suit every pocket from local and independent makers and producers who will be selling a tempting selection of unique presents."

### CADARTS CHRISTMAS CRAFT FAIR

**18 November**

Hoburne Naish Holiday Park, Christchurch Road, NEW MILTON, BH25 7RE. 10am - 4pm. £2. 01202 428004 / cadarts.co.uk.



**Present Makers 2018**  
A selling exhibition of contemporary craft  
**10 November - 22 December**

Thelma Hulbert Gallery, Elmfield House, Dowell Street, Honiton, Devon, EX14 1LX  
01404 45006 info@thelmahulbert.com www.thelmahulbert.com

Open: Tues - Sat 10am - 5pm | Free Admission, Donations welcome















# WESSEX WINTER GUIDE 2018

## 'VICTORIAN CHRISTMAS'

**20 November - December**

Russell-Cotes Art Gallery and Museum, BOURNEMOUTH, BH1 3AA. Tuesday - Sunday 10am - 5pm. £7.50. 01202 451858 / russellcotes.com. "Join us on the weekend of 15 and 16 December for carols, mince pies, and festive cheer, and find out how the Victorians celebrated this time of year."

## BARLEY WOOD WALLED GARDEN CHRISTMAS OPEN STUDIOS

**23 - 25 November**

Barley Wood Walled Garden, Long Lane, WRINGTON, Bristol, BS40 5SA. 11am - 4pm. walledgarden.co.uk. "Resident artists and makers exhibiting and selling paintings, enamels, glass, prints, pottery, ceramics, cards in stunning restored kitchen garden setting. Cider barn open for refreshments, also Ethicurean restaurant."

## SALISBURY GROUP OF ARTISTS: 'WINTER EXHIBITION'

**23 November - 4 January**

Salisbury District Hospital, Odstock Road, SALISBURY, SP2 8BJ. 9am - 9pm. 07496 894568 / salisburygroupofartists.co.uk. "Local landscapes and other original artworks suitable for purchase as unique presents."

## 'CREECH CHRISTMAS'

**24 November - 2 December**

The Old Blacksmiths, Grange Road, CREECH, Wareham, BH20 5DG. Saturday and Sunday 10am - 5pm, Monday - Friday 10am - 3pm. 07934 097371. "A fabulous selection of handmade gifts from local designers, artists and makers. In a warm and welcoming setting, enjoy cake in the pop up café. Textiles, ceramics, jewellery and paintings are just some of the wonderful goods on show."

## 'DECK THE HALLS'

**24 November - 22 December**

Hybrid Gallery, 51 High Street, HONITON, EX14 1PW. Tuesday - Saturday 10am - 5pm. 01404 43201. "Seasonal works from Gallery artists and crafts people to fit every pocket."

## 'CHRISTMAS COLLECTION'

**26 November - 21 December**

Ilminster Arts Centre, The Meeting House, East Street, ILMINSTER, TA19 0AN. Monday - Friday 9.30am - 4.30pm, Saturday 9.30am - 2.30pm. themeetinghouse.org.uk. "A gallimaufry of unique and unusual gifts hand-crafted by talented local makers."



VICTORIA BALL 'LONGLEAT'

## COLLECTION POINT

"A diverse selection of work spanning contemporary art, craft and design. Featuring 20 artists and designers, this exhibition promises a rich and engaging experience."

**1 November - 23 December:** Kobi & Teal, 57 Catherine Street, FROME, BA11 1DA. Tuesday - Saturday 10am - 4.30pm. 07737 367419 / kobiandteal.co.uk.

## 'HOT CHOCOLATE AND MULLED WINE'

**30 November - 2 December**

The Studio, Lower Courtyard, Rogershill Farm, BRIANTSPUDDLE, DT2 7HJ. 10am - 4pm. 07789 026546 / marilynallis.com. "Lots of very affordable original artwork. Acrylics, watercolours and mixed media."

## 'CADARTS PRESENTS'

**30 November - 19 December**

The Hayloft Gallery, 14 Wick Lane, CHRISTCHURCH, BH23 1HX. Time(s): 10am - 4pm. 01202 428004 / cadarts.co.uk. "A collection of unique but affordable Christmas gifts created by our local artisans."



## 'CURATE YOUR CHRISTMAS'

**1 - 22 December**

Andelli Art, Mendip House, Upper Breach, SOUTH HORRINGTON, Wells, BA5 3QG. Tuesday - Saturday 10am - 5pm. 01749 572373 / andelliart.com. "Curate your Christmas" showcases

Twentieth Century and contemporary art alongside handpicked and unique pieces from Somerset makers and designers, including jewellery by Mags Maxwell and Penny Price, studio pottery by Jessie Alcaraz and throws by Howe farm blankets."

## 'THE BRISTOL BAZAAR'

**1 - 24 December**

Upstairs Gallery, The Island, Bridewell Street, BRISTOL, BS1 2LE. Monday - Saturday 10am - 8pm, Sunday 11am - 4pm. bristolbazaar.co.uk. "70 Bristol based artists, designers and makers. Opening party Tuesday 4 December, 6pm until late, free punch, DJs and so many mince pies!"

DORSET VISUAL ARTS  
MEMBERS' EXHIBITION

## ART: CAUSE AND EFFECT

**24 NOVEMBER - 22 DECEMBER**  
BRIDPORT ARTS CENTRE  
dorsetvisualarts.org







**Andelli Art**

**CURATE YOUR CHRISTMAS**

SHOWCASING 20<sup>TH</sup> CENTURY  
AND CONTEMPORARY ART,  
JEWELLERY AND HOMEWARES

1-22 December  
2018

Open Tues-Sat  
10AM-5PM

[www.andelliart.com](http://www.andelliart.com)



JULIE WINSOR 'WIRE ANGELS'

## CHRISTMAS ARTY BAZAAR

"Come along to our last Arty Bazaar of the season, we'll have chestnuts roasting on an open fire, live music, delicious food, art and craft stalls, mulled cider and mince pies, plus a chance to get those Christmas presents that are truly out of the ordinary."

**1 December:** Boilerhouse Gallery, Sandy Hill Studios, Sandy Hill Lane, CORFE CASTLE, BH20 5JF. 12noon - 4pm. 01929 481073 / [boilerhousegallery.co.uk](http://boilerhousegallery.co.uk).

### CREATIVE CHRISTMAS MARKET

**8 December**

Trowbridge Town Hall, Market Street, TROWBRIDGE, BA14 8EQ. 10am - 3pm. 01225 774306 / [townhallarts.co.uk](http://townhallarts.co.uk).

10.30am - 4.30pm. [townmillarts.co.uk](http://townmillarts.co.uk).

"Discover ideal handmade gifts and last minute presents made by artists from the Southwest."

### WINTER ART SALE

**29 December - 23 January**

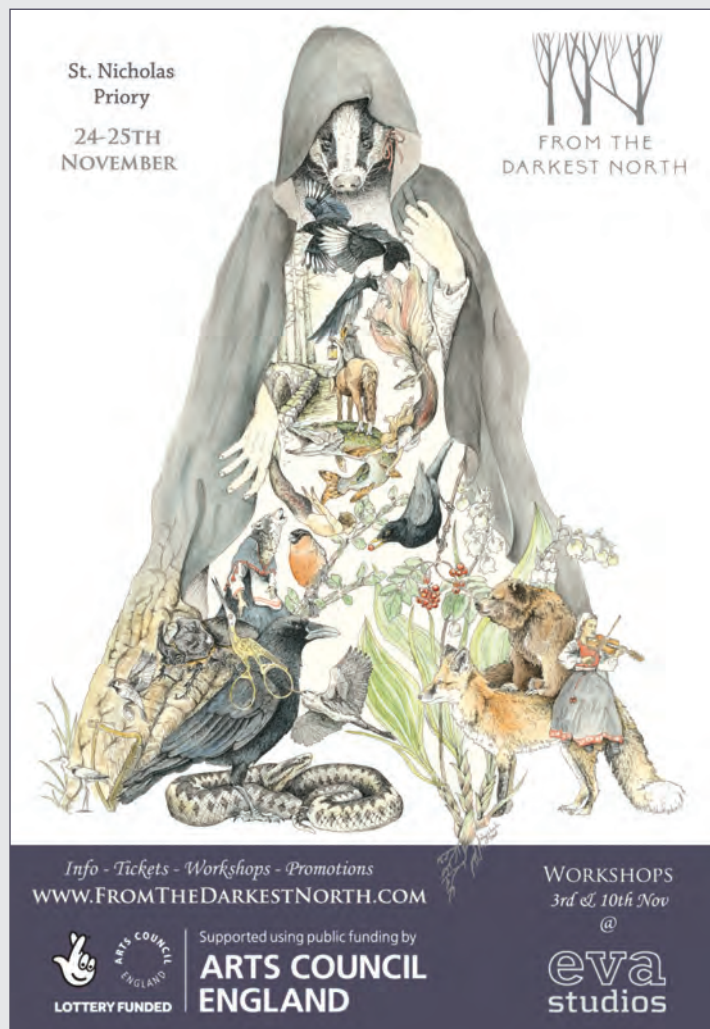
The Malthouse and Courtyard Galleries, The Town Mill, Mill Lane, LYME REGIS, DT7 3PU. 10.30am - 4.30pm. [townmillarts.co.uk](http://townmillarts.co.uk).



## CHILL

"Work by painters, ceramicists and makers from Somerset and beyond."

**17 November - 19 December:** Heritage Courtyard Gallery and Studios, 6 Heritage Courtyard, Sadler Street, WELLS, BA5 2RR. Tuesday - Saturday 10am - 4pm. 07974 255016 / [heritagecourtyardstudio.com](http://heritagecourtyardstudio.com).



St. Nicholas  
Priory  
24-25TH  
NOVEMBER

FROM THE  
DARKEST NORTH

Info - Tickets - Workshops - Promotions  
[WWW.FROMTHEDARKESTNORTH.COM](http://WWW.FROMTHEDARKESTNORTH.COM)

Supported using public funding by  
**ARTS COUNCIL  
ENGLAND**

LOTTERY FUNDED

WORKSHOPS  
3rd & 10th Nov  
@  
**eva  
studios**



# WESSEX WINTER GUIDE 2018



Jazmin Velasco

## PERFORMANCE

### 'FROM THE DARKEST NORTH' 24 and 25 November

St Nicholas Priory, Mint Lane, EXETER, EX4 3BL. 7pm. £12. 07791 550234 / fromthedarkestnorth.com. "Costume, song and storytelling combine to bring ancient Swedish folktales to life."



### NARTHEN: 'HARK HARK - A WINTER'S LIGHT'

1 December

St Mary's Church, BURTON BRADSTOCK, DT6 4QY. 7.30pm. £10 / £7. 01308 897421 / artsreach.co.uk. "Packed full of polyphonic a capella carols and other gorgeous seasonal songs and tunes, this show reflects all aspects of the winter season, from the beautiful carols of North Yorkshire, Derbyshire and beyond, to the irreverent nature of certain aspects of Christmas and the winter season."

### 'NO ANGEL'

1 December

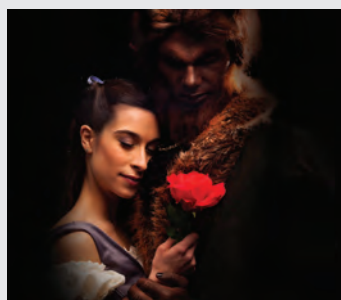
Bridport Arts Centre, South Street, BRIDPORT, DT6 3NR. 8pm. £15 / £12. bridport-arts.com. "Charlie Bicknell and Louise Innes blow the cover off Elsa and Anna, The Snowman and a poor little Drummer Boy. Santa will never be the same."



## A CHILD'S CHRISTMAS, POEMS AND TIGER EGGS

"Ballet Cymru presents a timeless interpretation of the Dylan Thomas classic A Child's Christmas, Poems and Tiger Eggs with music by Mason Neely and Wales' own icon Cerys Matthews."

22 November: Salisbury Arts Centre, Bedwin Street, SALISBURY, SP1 3UT. 7.30pm. £18 / £14. 01722 320333 / wiltshirecreative.co.uk.



### 'BEAUTY AND THE BEAST'

1 December - 13 January

Salisbury Playhouse, Malthouse Lane, SALISBURY, SP2 7RA. Various times. £27 / £12. wiltshirecreative.co.uk. "The spellbinding pantomime."

### NARTHEN: 'HARK HARK - A WINTER'S LIGHT'

2 December

Village Hall, HINTON MARTELL, BH21 7HE. 7.45pm. £10 / £7. 01258 840066 / artsreach.co.uk. See 1 December.

### DAVID PRATLEY: 'CHRISTMAS RECITAL'

6 December

Lighthouse, Kingland Road, POOLE, BH5 1UG. 1.05pm. lighthouse.co.uk.

### 'NATIVITY'

7 December

Bridport Arts Centre, South Street, BRIDPORT, DT6 3NR. 7.30pm. £14 / £13. bridport-arts.com. "Living Spit's Nativity promises Christmassy crudeness that you'll never forget! Not for the faint-hearted..."

### NEAR-TA THEATRE: 'CHRISTMAS TIME'

7 December

Pamela Hambro Hall, WINTERBORNE STICKLAND, DT11 0NT. 7.30pm. £10 / £6. 01258 880920 / artsreach.co.uk. "Charlie and Toby are feeling low, and why wouldn't they? It's Christmas Day and they're serving time at Her Majesty's pleasure. But why shouldn't they be having a Merry Christmas in spite of their incarceration? What's stopping them from creating Christmas around them? Absolutely nothing! And so they set off on their festival of carols, Claus, Christ and custody! Join them on a fantastical adventure through Dickens, pantomime, musical, Christmas dinner and Christmas films! See as they build a wonderfully Merry Christmas around them with songs, snowmen and lots of laughs in this truly festive show that puts the 'cel' firmly back in 'celebration!'"

### 'SUN RECORDS CHRISTMAS HOP'

8 December

Lighthouse, Kingland Road, POOLE, BH5 1UG. 7.30pm. lighthouse.co.uk.

### 'THE NATIVITY'

8 December

Dorchester Arts, The Corn Exchange, High East Street, DORCHESTER, DT1 1HF. 8pm. £14 / £12. 01305 266926 / dorchesterarts.org.uk. See 7 December.

### NEAR-TA THEATRE: 'CHRISTMAS TIME'

8 December

Village Hall, MARTINSTOWN, DT2 9LF. 7.30pm. £10 / £6. 01305 889963 / artsreach.co.uk. See 7 December.

### 'CHRISTMAS CRACKER: COMEDY NIGHTS'

8 - 20 December

Salisbury Arts Centre, Bedwin Street, SALISBURY, SP1 3UT. 8pm. £22. 01722 320333. "With a different line-up of comedy acts each night, you'll be laughing round the Christmas tree."

### THE RIDGEWAY SINGERS & BAND: 'WEST GALLERY CAROLS'

9 December

Holy Trinity Church, WEST LULWORTH, BH20 5RY. 4pm. £8 / £5. 01929 400790 / artsreach.co.uk. "With their roots in the South Dorset Ridgeway and inspired by the rich sources of locally collected folk songs and West Gallery carols, the Ridgeway Singers and Band led by Tim Laycock and Phil Humphries have once again tuned their fiddles and voices to present a joyous celebration of Christmas past and present."

**Contemporary Interiors in Wood**  
Rodden Row, Abbotsbury, DT3 4JL  
www.danselgallery.co.uk  
01305 871515  
Open 10am - 5pm every day

**COLLECTION POINT**  
an exhibition of  
20 Artists

Kobi & Teal Gallery  
57 Catherine Street  
Frome  
BA11 1DA

Tuesday - Saturday  
10am - 4.30pm

**KOBI & TEAL**

## Creech Christmas @ The Old Blacksmiths 24th November - 2nd December

Experience a stunning mix of art and Christmas wonder

Relax and enjoy festive cakes in the pop up café



Saturday and Sunday 10 - 5  
Monday to Friday 10 - 3  
Fb: creechchristmas  
Insta: @creechchristmas  
E: creechchristmas@gmail.com



# WESSEX WINTER GUIDE 2018

## 'THE NIGHT BEFORE CHRISTMAS'

**10 - 30 December**

The Salberg, Salisbury Playhouse, Malthouse Lane, SALISBURY, SP2 7RA. Various times. £10. 07122 320333 / wiltshirecreative.co.uk. "Returning by popular demand, magic and music combine in this enchanting musical for young children and families that's the perfect Christmas treat."

## 'CHRISTMAS CRACKER: WHO SLEIGHED SANTA?'

**11 - 13 December**

Salisbury Arts Centre, Bedwin Street, SALISBURY, SP1 3UT. 7pm. £45 (includes 3-course dinner). 01722 320333 / wiltshirecreative.co.uk. "Put your detective skills to the test as your team interrogates suspects and solves clues, or simply sit back, watch and enjoy your meal. Perfect for Christmas parties and a fun night out with family and friends."

## CANTAMUS: 'MUSIC FOR CHRISTMASTIDE'

**13 December**

Milton Abbey, MILTON ABBAS, DT11 0BZ. 7.30pm. £10 / £5. 01258 881235 / artsreach.co.uk. "Performing the very best, and often unfamiliar, sacred, secular and consort music, Cantamus present a programme for the advent season drawn from nearly 500 years of music."



## YULEKULELE

**13 and 14 December**

Lighthouse, Kingland Road, POOLE, BH5 1UG. 7pm. 01202 280000 / lighthouse.co.uk. "A riotous comedy cabaret of outlandish live music, festive holiday high jinks and feral puppetry brought to you by tweedy funksters The Ukulele Evangelists."

## THE CHURCHFITTERS: 'CHRISTMAS CRACKER'

**14 December**

Village Hall, Frampton, DT2 9NF. 7.30pm. £10 / £6. 07968 586906 / artsreach.co.uk.



## THE LITTLE MATCH GIRL

"London. Christmas Eve. The snow is falling and a little girl struggles fiercely through the cold. Follow her throughout the day as she encounters the funny and zany characters of the vibrant city streets. In an attempt to stay warm she strikes a match. The flames blaze to life, illuminating her fantastic Christmas visions. Enter the tumultuous world of her imagination, meeting talking turkeys, dancing rats and Queen Victoria, Prince Albert and their chattering Christmas tree!"

**15 December:** Village Hall, CORFE CASTLE, BH20 5EE. 2pm. £8 / £6. 07590 352219 / artsreach.co.uk.

**16 December:** Dorchester Arts, The Corn Exchange, High East Street, DORCHESTER, DT1 1HF. 1.30 and 4.30pm. £8 / £6. 01305 266926 / dorchesterarts.org.uk.

**19 December:** Trowbridge Town Hall, Market Street, TROWBRIDGE, BA14 8EQ. 6.30pm. £10 / £8. 01225 774306 / townhallarts.co.uk.

## 'A CHRISTMAS CAROL'

**15 December**

Pound Arts Centre, Pound Hill, CORSHAM, SN13 9HX. 7.30pm. £14 / £12. 01249 701628 / poundarts.org.uk.

"This unique retelling of Dickens' heart-warming tale uses a magical blend of new lyrics, traditional midwinter English folk tunes and carol melodies to illustrate the transformation of flinty-hearted Ebenezer Scrooge into the epitome of the Christmas spirit."

## NEAR-TA THEATRE: 'CHRISTMAS TIME'

**15 December**

The Beehive, Dowell Street, HONITON, EX14 1LZ. 7pm. £8 / £6. 01404 384050. See 7 December.

## THE CHURCHFITTERS: 'CHRISTMAS CRACKER'

**15 December**

Village Hall, CHILD OKEFORD, DT11 8EL. 7.30pm. £10 / £6. 01258 861621.

## 'CAROLS AND CLASSICS BY CANDLELIGHT'

**15 December**

All Saints Church, Church Street, MERRIOTT, TA16 5PS. 7pm. £10. 01460 76360 / 07870 404631. "The tenth and final Christmas concert by the Fisher Sinfonia will close with the largest string ensemble ever to visit the church, with an evening of classical and festive arrangements."



## THE MELLSTOCK BAND

**15 December**

Halsway Manor, Halsway Lane, near CROWCOMBE, TA4 4BD. 8pm. £12. 01984 618274 / halswaymanor.org.uk. "The Mellstock Band celebrates the customs of Wintertime in rural England, exploring beliefs and superstitions, and drawing on seasonal ballads and folk carols as well as West Gallery carols and village dance music."

## THE RIDGEWAY SINGERS & BAND: 'WEST GALLERY CAROLS'

**16 December**

Harrison Hall, CHARLTON DOWN, Dorchester, DT2 9UA. 4pm. £8 / £5. 01305 264060. See 9 December.

## THE CHURCHFITTERS: 'CHRISTMAS CRACKER'

**16 December**

Village Hall, WINFRITH, DT2 8JR. 7.30pm. £10 / £7.50. 01305 853783 / artsreach.co.uk.

## 'A CHRISTMAS CAROL'

**18 - 20 December**

Lighthouse, Kingland Road, POOLE, BH5 1UG. 7pm (Wednesday matinee 2pm, Thursday matinee 4.30pm). 01202 280000 / lighthouse.co.uk.

"Mesmerising one-man performance by David Myrre of Charles Dickens' timeless, transformative story."

## 'A CHRISTMAS CAROL'

**19 - 22 December**

The Salberg, Salisbury Playhouse, Malthouse Lane, SALISBURY, SP2 7RA. 7.45pm (Thursday and Saturday matinees 2.45pm). £13.50 / £9. 01722 320333. "Adapted and performed by Guy Masterson, Dickens' mystical fable returns."



# THE CREATIVE GALLERY

Showcasing ceramics, paintings, textiles, jewellery and glass by local artists



"Coming back for Christmas"

1st November - 24th December

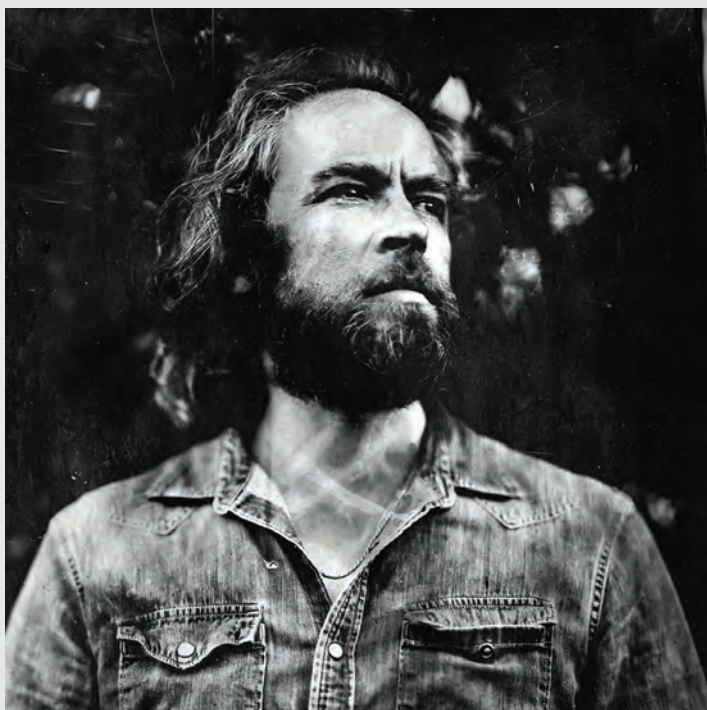


A Very Happy Christmas from all at Creative

St John's Hill, Wareham, Dorset BH20 4NB t 01929 551700 e fiona@creativegallerywareham.co.uk

Open Monday-Saturday 10am-5pm, closing 4pm on 24th December





## DUKE GARWOOD

"Garwood has been widely praised as a master bluesman, with The Quietus saying 'The combination of Garwood's murmured vocals and the sound he gets out of his guitar - which ranges from a rolling, loose finger-picking to shuddering howls of feedback - has a hypnotic effect' and The Mirror dubbing him as 'London's leading exponent of the wheezy broke-down blues'."

**15 December:** Other Side @ Haydon Church, HAYDON, DT9 5JB. 7pm. £10. other-side.eventbrite.co.uk.

### 'SEASON'S GREETINGS'

**20 - 22 December**

Dorchester Arts, The Corn Exchange, High East Street, DORCHESTER, DT1 1HF. 7.30pm. £12 / £10. 01305 266926. "Somerleigh Players guarantee festive fun. A play about love and about how unfair it is. And success and failure. And jealousy and self-deception. And greed and envy and lust and gluttony. Just an average family Christmas."

### 'CHRISTMAS CRACKER: THE SPITFIRE SISTERS'

**21 - 22 December**

Salisbury Arts Centre, Bedwin Street, SALISBURY, SP1 3UT. 8pm. £22. 01722 320333. "The internationally-renowned vintage-inspired vocal harmony group performs swing classics and Christmas favourites."

### 'THE SNOW BABY'

**22 December**

Bridport Arts Centre, South Street, BRIDPORT, DT6 3NR. 2pm. 01308 424204 / bridport-arts.com. "Soap Soup Theatre present a magical children's theatre show with beautiful puppetry, imaginative storytelling and music that will give you goosebumps - a gentle show exploring family, love and loss, with lots of music, confetti and funny bits for the whole family to enjoy!"

### 'TWINKLE TWINKLE'

**22 December**

Pound Arts Centre, Pound Pill, CORSHAM, SN13 9HX. 11am, 1 and 4pm. £8 / £7. 01249 701628. "A heart-warming adventure in melody and light, featuring brilliant puppetry, magical interaction and gorgeous music."

### BOURNEMOUTH SYMPHONY ORCHESTRA: 'LIGHT NIGHT OF THE CHRISTMAS PROMS'

**22 December**

Lighthouse, Kingland Road, POOLE, BH5 1UG. 7.30pm. lighthouse.co.uk. "Kick off Christmas with a fun-packed concert for all the family, featuring classics old and new, all wrapped up with a sprinkling of magic and sparkle. A rollercoaster of seasonal favourites includes Jingle Bells, White Christmas, Sleigh Ride, Walking in a Winter Wonderland, Let it Snow Let it Snow, Have Yourself a Merry Little Christmas and much, much more!"

### 'REINDEER ON THE ROOF'

**22 and 23 December**

Pound Arts Centre, Pound Pill, CORSHAM, SN13 9HX. Saturday 2 and 6pm, Sunday 12 noon and 4pm. £8 / £7. 01249 701628 / poundarts.org.uk. "Join Darcy on her epic adventure to get her new reindeer friend back to Lapland and discover the true meaning of Christmas along the way."

### BOURNEMOUTH SYMPHONY ORCHESTRA: 'CHRISTMAS CAROLS'

**23 December**

Lighthouse, Kingland Road, POOLE, BH5 1UG. 7.30pm. lighthouse.co.uk.

### 'RAZZLE DAZZLE NEW YEAR'S EVE PARTY'

**31 December**

Bocabar, The Red Brick Building, Morland Road, GLASTONBURY, BA6 9EW. 8pm. £20. 01458 440558. "Sparkle and shimmer the new year in with the Zen Hussies, plus DJs Extra Slim, Slim, Squash and guests. UV Silent Disco Room."

*A bustling hub,  
full of this season's festivities.*

Christmas Lunch menu 2 courses £19 \* 3 courses £24  
Christmas Dinner menu 2 courses £24 \* 3 courses £29

30TH NOVEMBER - 24TH DECEMBER  
T: 0117 972 8838 \* E: bocabarbookings@outlook.com  
T: 01458 440558 \* E: bocabarglastonbury@outlook.com

BRISTOL • GLASTONBURY

W: bristol.bocabar.co.uk W: glastonbury.bocabar.co.uk

# Christmas PARTY NIGHTS AT SALISBURY ARTS CENTRE

**Tue 11 - Thu 13 Dec**  
**WHO SLEIGHED SANTA?**  
A murder mystery dinner party with a festive twist.

**Tue 18 - Thu 20 Dec**  
**STAND-UP COMEDY NIGHTS**  
With a different line-up of comedy acts each night, you'll be laughing round the Christmas tree.

**Fri 21 - Sat 22 Dec**  
**THE SPITFIRE SISTERS CHRISTMAS SWING**  
Vintage-inspired vocal harmony group The Spitfire Sisters perform swing classics and Christmas favourites.

Book your perfect Christmas party today and enjoy a fun night out with family, friends or the whole office!

**SALISBURY ARTS CENTRE**  
WILTSHIRE CREATIVE

01722 320 333  
wiltshirecreative.co.uk

Salisbury Arts Centre, Bedwin St, Salisbury, SP1 3UT





# CHILL

**Saturday 17 November - Wednesday 19 December**  
Tuesday - Saturday 10am - 4pm

**Heritage Courtyard Gallery and Studios**

6 Heritage Courtyard, Sadler Street, Wells, BA5 2RR  
07974 255016 / heritagecourtyardstudio.com



Once again Heritage Courtyard Gallery and Studios will be showcasing their usual high standard of contemporary art for this year's winter exhibition.

**THE BRISTOL BAZAAR**

THE BEAUTIFUL & THE BAZAAR

**POP UP CHRISTMAS SHOP**

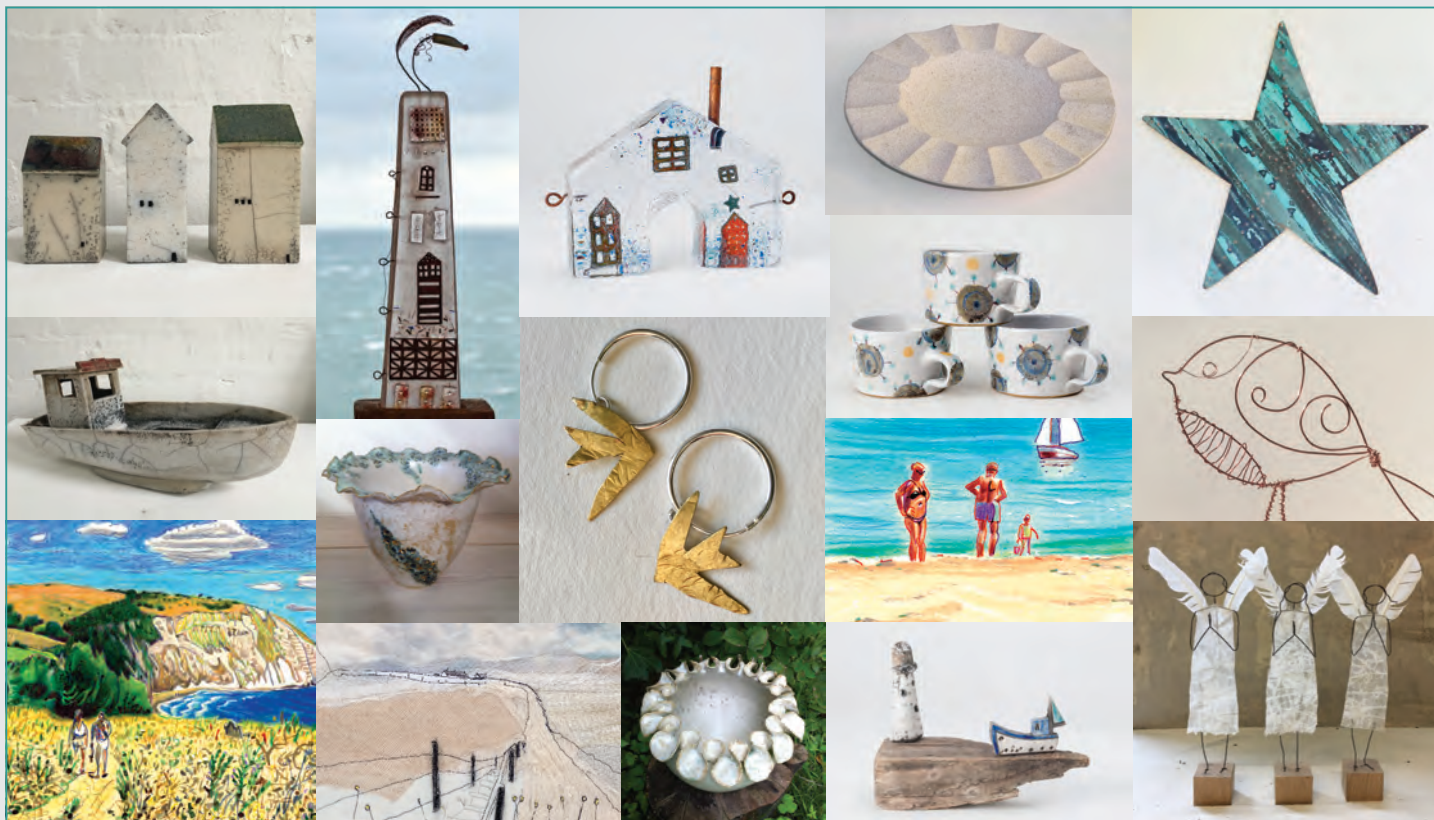
1-24 DEC

**THE ISLAND**

OVER 60 LOCAL ARTISANS

OPEN MON-SAT 10:00-20:00 / SUN 11:00-16:00  
THE ISLAND, UPSTAIRS GALLERY, BRIDEWELL STREET  
BRISTOL BS1 2LE

**BRISTOLBAZAAR.CO.UK**  
BRISTOL BAZAAR



## CHRISTMAS GIFTS THAT ARE TRULY OUT OF THE ORDINARY

Join us for some mulled wine  
and mince pies every Saturday  
in December

## CONTEMPORARY ART AND CRAFT GALLERY Boilerhouse Gallery

Open Monday - Saturday 11am - 4pm  
Sandy Hill Lane, Corfe Castle, Dorset BH20 5JF  
[www.boilerhousegallery.co.uk](http://www.boilerhousegallery.co.uk)

## EVENT CHRISTMAS ARTY BAZAAR

ART, CRAFT, GIFTS,  
LIVE MUSIC, FOOD  
**Saturday 1st December**  
12noon - 4pm



# PERFORMANCE

November and December 2018



## THIS REALLY IS TOO MUCH

In a year when #metoo, gender pay inequality and the feminist agenda has rarely been out of the headlines, 2018 is an especially appropriate time for Gracefool Collective to tour their powerfully satirical Edinburgh hit *This Really Is Too Much*.

Raucous, provocative and laugh-out-loud funny, the four-piece have created a genre-busting show that reveals the downright absurd realities of life as a three-dimensional, high definition, water-drinking, salad-eating, moisturising W.O.M.A.N. in modern society.

Gracefool Collective are based in Leeds but one of the stars of the show is Bridport (Little Cheney) born Rachel Fullegar who attended school in Weymouth and developed her love of dance and theatre in Dorset. She began at Bernard Gale's School of Dance before going on to appear with Bridport Pantomime Players and Dorset Youth Dance Company and went on to study dance at GCSE and A-level and pursue her dream at the Northern School of Contemporary Dance.

Gleefully compelling, slickly choreographed and dripping with feminist charm and anarchic wit, *This Really Is Too*

*Much* combines dance, dark comedy and theatre. An accessible and humorous exploration of gender inequalities the show delves deeply into a world of farcical stereotypes and preposterous power struggles, wrestling with gender, identity and social convention along the way.

After 100 years of women's suffrage in Britain how far have we really come in that time?

*This Really Is Too Much* is an outlandish, thought-provoking and wildly entertaining medley of absurd political speeches, talent

contests, job interviews and box ticking. The four performers, Kate Cox, Sofia Edstrand, Rachel Fullegar and Rebecca Holmberg, fight themselves, each other and society's expectations for women to be individual, political, beautiful, popular, in control - and in their place. It includes text from Kate Bernstein's seminal text *Gender Outlaw*.

The four Gracefools (collectively) say: "This show is for anyone interested in dance, theatre, laughing, crying, feminism, gender, identity, smashing the system, ticking the boxes, beauty pageants, political speeches, salad, moisturiser, water, turtle necks, disco, Steely Dan and / or Barry White'."

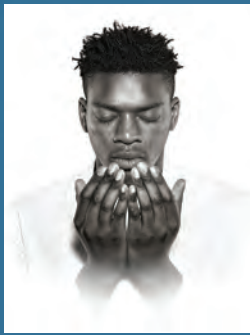
**27 November:** Weymouth Bay Theatre, Cranford Avenue, WEYMOUTH, DT4 7LQ. 7.30pm. £12 / £10. 01305 208702.

**28 November:** Dorchester Arts, The Corn Exchange, High East Street, DORCHESTER, DT1 1HF. 8pm. £12 / £10 / £5. 01305 266926 / [dorchesterarts.org.uk](http://dorchesterarts.org.uk).



[gracefoolcollective.com](http://gracefoolcollective.com)





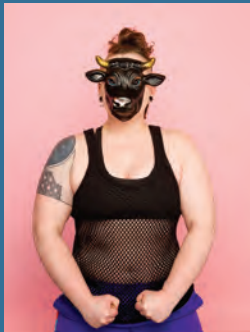
Tue 20 – Sat 24 November

English Touring Theatre, Oxford Playhouse and Shakespeare at the Tobacco Factory

## William Shakespeare's Othello

One of Shakespeare's most startlingly contemporary plays - a masterful depiction of a life torn apart by prejudice.

7.30pm, 2pm (Wed & Fri)  
THEATRE



Thu 29 November - Sat 1 December

## Bullish

A new mythical play with songs, negotiating ancient and new territories in trans-masculine gender and identity. Appearing as part of the Come as You Are Festival. A festival of trans, non-binary and gender queer theatre.

8pm  
THE SHERLING STUDIO



Tue 18 - Thu 20 December

## A Christmas Carol

Spend an evening in the company of a mean, tight-fisted, squeezing, grasping, clutching old miser. Celebrate the festive season with a mesmerising one-man performance of Charles Dickens' timeless, transformative story.

7pm, 2pm (Wed matinee 4.30pm)  
THE SHERLING STUDIO



Wed 9 - Sat 12 January

## Saint Petersburg Classic Ballet

Swan Lake & Sleeping Beauty

Two stunning Ballets each presented in classic Russian style with full live orchestra.

7.30pm 2.30pm (Thu & Sat Matinees)  
THEATRE



Thu 7 February

## The Capital

Five contrasting lives slide and collide across the big city, turning themes of financial inequality and strained human relationships into a vivid visual story told without words. Featuring moving walkways, bold performance and a rich soundtrack.

7.45pm  
THEATRE

## PERFORMANCE



## LUKE WRIGHT: FRANKIE VAH

"Following the multi-award-winning What I Learned From Johnny Bevan, Luke Wright's second verse play deals with love, loss, and belief, against a backdrop of skuzzy indie venues and '80s politics. Expect frenetic guitars, visceral verse, and a Morrissey-sized measure of heartache."

**8 November:** Lighthouse, Kingland Road, POOLE, BH5 1UG. 7.30pm. 01202 280000 / lighthouse.co.uk.

### 'ABIGAIL'S PARTY'

30 October - 17 November

Salisbury Playhouse, Malthouse Lane, SALISBURY, SP2 7RA  
Monday - Saturday 7.30pm (Thursday and Saturday matinees 2.15pm). £27 / £13. 01722 320333. "Made famous by the BBC Play for Today starring Alison Steadman, Mike Leigh's *Abigail's Party* is a hilarious masterpiece of situation comedy. Watch as the appalling hosts' soiree descends into chaos."

### RUTH ROYALL QUARTET

2 November

Bocabar, The Red Brick Building, Morland Road, GLASTONBURY, BA6 9EW. 7.30pm. £6. 01458 440558 / glastonburybocabar.co.uk. "Stunning jazz vocalist performing classics made famous by the likes of Billie Holiday, Nina Simone and Ella Fitzgerald."

### 'NOT: LADY CHATTERLEY'S LOVER'

2 November

Lighthouse, Kingland Road, POOLE, BH5 1UG. 8pm. 01202 280000 / lighthouse.co.uk. "High drama, high comedy and highly raised eyebrows."

### 'CLOUDBUSTING: 40 YEARS OF KATE BUSH'

2 November

Dorchester Arts, The Corn Exchange, High East Street, DORCHESTER, DT1 1HF. 8pm. £15 / £13. 01305 266926 / dorchesterarts.org.uk.

### MATT CARTER QUINTET

2 November

Ilminster Arts Centre, The Meeting House, East Street, ILMINSTER, TA19 0AN. 8pm. £15. 01460 54973 / themeeetinghouse.org.uk. "Swinging jazz, uplifting songs and skilfully crafted solos."

### SARAH MCQUAID

2 November

The Lamb Inn, Mortimer Street, TROWBRIDGE, BA14 8BN. 8pm. £10. villagepump.org.uk. "Born in Spain, raised in Chicago, now living in Cornwall, Sarah has a voice likened to 'malt whisky, melted chocolate and honeyed wine' and is a stunning guitarist."

### 'UNSIGNED'

2 November

Trowbridge Town Hall, Market Street, TROWBRIDGE, BA14 8EQ. 7.30pm. £4. townhallarts.co.uk. "The best young musical talent from the local area."

### NICOLA FARNON TRIO

2 November

Pound Arts Centre, Pound Pill, CORSHAM, SN13 9HX. £14 / £12. 01249 701628 / poundarts.org.uk.

### 'AND THEN THERE WERE NONE'

2 and 3 November

The Beehive, Dowell Street, HONITON, EX14 1LZ. 7.30pm. £12. 01404 384050 / beehivehoniton.co.uk. "A Honiton Community Theatre Company production."

### 'PENNY DREADFUL!'

3 November

Trowbridge Town Hall, Market Street, TROWBRIDGE, BA14 8EQ. 7.30pm. £8. 01225 774306 / townhallarts.co.uk. "There are chills and chuckles in abundance with this original one-woman show featuring Sweeney Todd's partner in crime, Mrs Lovett!"



### JIM CAUSLEY

3 November

Pound Arts Centre, Pound Pill, CORSHAM, SN13 9HX. 7.30pm. £14 / £12. 01249 701628 / poundarts.org.uk. Folk.

### 'VENTOUX (2 MAGPIES)'

3 November

Dorchester Arts, The Corn Exchange, High East Street, DORCHESTER, DT1 1HF. 8pm. £13 / £11 / £5. 01305 266926 / dorchesterarts.org.uk. "The story of Lance Armstrong and Marco Pantani on the fearsome Mont Ventoux in the 2000 Tour de France."

01202 280000

www.lighthousepoole.co.uk





# PERFORMANCE

## 'BIG BIRTHDAY BASH!'

**3 November**

Lighthouse, Kingland Road, POOLE, BH5 1UG. 8pm. 01202 280000 / lighthouse.co.uk. "Lighthouse is 40 and is celebrating with a Big Birthday Bash! The Deloreons will be rocking the Concert Hall followed by Steve Power from Wave 105 playing music from the '70s, '80s, '90s and now."

## 'NO PETTICOATS HERE'

**3 November**

Lighthouse, Kingland Road, POOLE, BH5 1UG. 8pm. 01202 280000 / lighthouse.co.uk. "Stories of First World War women through song."

## LES FANFLURES

**3 November**

Bocabar, The Red Brick Building, Morland Road, GLASTONBURY, BA6 9EW. 8pm. £8 / £6. 01458 440558 / glastonburybocabar.co.uk. "Contagious and brawny New Orleans style jazz funk mixing with a special French touch."

## LOST DOG: 'JULIET AND ROMEO'

**3 November**

Williams Hall, Dark Lane, STOKE ST GREGORY, Taunton, TA3 6EU. 7.45pm. £12 / £8. 01823 490981. "Contemporary dance."

## LUKE BROWN: 'FOR YOU I LONG THE LONGEST'

**3 November**

Bridport Arts Centre, South Street, BRIDPORT, DT6 3NR. 7.30pm. £13 / £11. 01308 424204 / bridport-arts.com. "A double-bill of autobiographical stories told through raw and exhilarating dance theatre."

## 'LIGHT TO THE DARKNESS'

**4 November**

Bridport Arts Centre, South Street, BRIDPORT, DT6 3NR. 6.30pm. £12 / £10. 01308 424204 / bridport-arts.com. "A cast of readers and musicians present poetry and readings about the war and the coming of peace."

## ENDYMION

**4 November**

Rook Lane Chapel, Bath Street, Frome, BA11 1DN. 3.15pm. £16. 01373 468040 / fromeconcertsgroup.org. "Exquisite instrumental playing and delightful repertoire from this world class ensemble."

## EVENING STAR

**6 November**

Pound Arts Centre, Pound Pill, CORSHAM, SN13 9HX. 7.30pm. £14 / £5. 01249 701628 / poundarts.org.uk. "New music inspired by European culture."



## KITTY MCFARLANE

"Kitty McFarlane is coming into her own with some remarkable songwriting, a marked empathy with the environment, and a strong sense of place: references to Somerset landscapes, wildlife and folklore pepper Kitty's music, connecting to her love of the area where she grew up."

**4 November:** Halsway Manor, Halsway Lane, near CROWCOMBE, TA4 4BD. 7.30pm. £10 / £4. 01984 618274 / halswaymanor.org.uk.

## 'THE MEN WHO MARCHED AWAY'

**7 November**

Dorchester Arts, The Corn Exchange, High East Street, DORCHESTER, DT1 1HF. 8pm. £12 / £10 / £5. 01305 266926 / dorchesterarts.org.uk. "Music and song tell the story of 'The War to End All Wars'."

## 'WITHERING LOOKS'

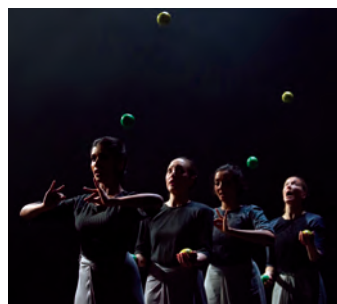
**7 November**

Lighthouse, Kingland Road, POOLE, BH5 1UG. 7.45pm. 01202 280000 / lighthouse.co.uk. "Lip Service, Britain's favourite literary lunatics, are back with their cult Brontë spoof."

## BOURNEMOUTH SYMPHONY ORCHESTRA: 'TESTAMENT'

**7 November**

Lighthouse, Kingland Road, POOLE, BH5 1UG. 7.30pm. 01202 280000 / lighthouse.co.uk.



## GANDINI JUGGLING: 'SIGMA'

**8 November**

Lighthouse, Kingland Road, POOLE, BH5 1UG. 7.45pm. 01202 280000 / lighthouse.co.uk. "Gandini Juggling's beautiful new show explores the creative interface between juggling, geometry and classical Indian dance."

## PETER GILL: 'MEET TOMMY ATKINS'

**8 November**

Village Hall, BROADOAK, DT6 5NL. 7.30pm. £8 / £4. 01308 424922 / artsreach.co.uk.

## 'BIG HEADS AND OTHERS'

**8 November**

Bridport Arts Centre, South Street, BRIDPORT, DT6 3NR. 7.30pm. 01308 424204 / bridport-arts.com. "An hour of comedy sketches, co-written by local trio Gail Aldwin, Sarah Scally and Maria Pruden."

## 'MAY'

**8 November**

Trowbridge Town Hall, Market Street, TROWBRIDGE, BA14 8EQ. 7.30pm. £10. 01225 774306 / townhallarts.co.uk.



**caldecourt**  
productions

Rémy Lloyd LRPS  
Esmé Lloyd LRPS  
**07710 618072**

caldecourt@hotmail.com

caldecourtproductions.com



# PERFORMANCE

## 'THICK AS THIEVES'

8 - 10 November

The Salberg, Salisbury Playhouse, Malthouse Lane, SALISBURY, SP2 7RA. 7.45pm (Saturday matinee 2.45pm). £13.50 / £9. 01722 320333. "This tense, revealing play from *Clean Break* explores what it means to care for one another and asks who, in a time of increasing disconnect, we expect to look after us."

## CHARLIE + JAKE

9 November

Bridport Arts Centre, South Street, BRIDPORT, DT6 3NR. 8pm. £10. 01308 424204 / bridport-arts.com. Jazz.

## 'TO HELL IN A HANDBAG'

9 November

Bridport Arts Centre, South Street, BRIDPORT, DT6 3NR. 8pm. £13 / £11. 01308 424204 / bridport-arts.com. "While others are preoccupied with cucumber sandwiches and railway cloakrooms, Canon Chasuble and Miss Prism are up to their necks in something else."



## PIP UTTON: 'AT HOME WITH SHAKESPEARE'

9 November

Royal Manor Theatre, PORTLAND, DT5 1LT. 7.30pm. £9 / £6. 03336 663366 / artsreach.co.uk. "Pip looks back on Shakespeare's loves - the desire, the exhilaration, but also the fear of rejection and grief for lost love."

## THE TRIO PARADIS

9 November

Ilminster Arts Centre, The Meeting House, East Street, ILMINSTER, TA19 0AN. 8pm. £14. 01460 54973. "Classical favourites, folk, jazz, and musical hits."

## 'CANARY'

9 November

The Beehive, Dowell Street, HONITON, EX14 1LZ. 7.30pm. £12 / £10 / £5. 01404 384050 / beehivehoniton.co.uk. "A thrillingly dark physical comedy based on the real life stories of Britain's unsung war heroes, The Canary Girls."



## BUDAPEST CAFE ORCHESTRA

"Led by the award-winning jazz violinist and composer Christian Garrick, the Budapest Café Orchestra put their own spin on traditional folk and gypsy flavoured music from across the world."

**22 November:** Village Hall, EVERSNOT, DT2 0JY. 7.30pm. £10 / £6. 01935 83784.

**23 November:** Village Hall, BOURTON, SP8 5BJ. 7.30pm. £10 / £6. 01747 840057.

**24 November:** Village Hall, CORFE CASTLE, BH20 5EE. 7.30pm. £10 / £6. 07590 352219.

**25 November:** Cecil Memorial Hall, CRANBORNE, BH21 5QB. 4pm. £12 / £6. 01725 517500.

artsreach.co.uk



## 'THE GATHERING: MESSAGES FROM THE GREAT WAR'

9 November

Village Hall, MARNHULL, DT10 1JZ. 7.30pm. £10 / £6. 01258 820381 / artsreach.co.uk. "Intensely moving, The Gathering is both a love story and a message of resilience and hope."



## BSO RESONATE STRINGS: 'AUTUMN SERENADE'

9 November

St Christopher's Church, WINFRITH, DT2 8JR. 7.30pm. £10 / £7.50. 01305 853783. "This engaging concert will reflect the wonderful diversity of the classical string repertoire featuring music from Vivaldi to Brahms, Bach to Elgar, and Joplin to Bartók."

## THE RIVERTONES + TRIO ANGLAIS

+ THE SILVER STREET BAND

9 November

Tacchi-Morris Arts Centre, School Road, TAUNTON, TA2 8PD. 7.30pm. £12. 01823 414141 / tacchi-morris.com.

"Folk, blues, rock, country and jazz."

## PETER GILL: 'MEET TOMMY ATKINS'

9 November

Pound Arts Centre, Pound Pill, CORSHAM, SN13 9HX. 7.30pm. £12 / £10. 01249 701628 / poundarts.org.uk. See 8 November.

## 'DREAMING THE NIGHT FIELD'

9 November

Village Hall, WOOTTON FITZPAINE, DT6 6NF. 7.30pm. £9 / £7. 01297 560948 / artsreach.co.uk.

## ZZ BIRMINGHAM BIG BAND

9 November

Hawthorns, 8 Northload Street, GLASTONBURY, BA6 9JJ. 8.30pm. hawthornshotel.co.uk. "A heady mix of blues, strings and brass from one of the great characters of the UK music scene."

## 'A BEAUTIFUL NOISE'

9 November

Lighthouse, Kingland Road, POOLE, BH5 1UG. 7.30pm. lighthouse.co.uk. "Neil Diamond covers."

## 'RAGE, TEARS AND CIDER - PEACE DAY 1919'

10 November

The Exchange, Old Market Hill, Sturminster Newton, DT10 1FH. 3 and 7.30pm. £8 / £4. 01258 475137 / stur-exchange.co.uk. "On one day in Sturminster Newton, real and fictional characters celebrate, grieve, complain and laugh as they explore issues that helped shape the century."

## HARRY + CHRIS

10 November

Lighthouse, Kingland Road, POOLE, BH5 1UG. 8pm. lighthouse.co.uk.

## WISHBONE ASH

10 November

Cheese & Grain, Market Yard, FROME, BA11 1BE. 8pm. £22.50 / £19.50. 01373 455420 / cheeseandgrain.com. "One of the world's top rock and blues bands. Their hard-hitting, dual guitar led brand of rock has endured for almost 50 years with founder member Andy Powell still at the forefront."

## 'DREAMING THE NIGHT FIELD'

10 November

Village Hall, WINTERBORNE STICKLAND, DT11 0NT. 7.30pm. £10 / £7. 01258 880920 / artsreach.co.uk.

## Every job starts with a blank canvas.

At AztecMedia we have over 25 years experience in design and marketing. So whether you're an independent artist needing a website or a large venue looking for promotional material, everything we do is tailored to suit who you are.

**aztecmedia**  
born to be creative®

01935 477 073 • AztecMedia.eu





# PERFORMANCE



## SHANE SHAMBHU: CONFESSIONS OF A COCKNEY TEMPLE DANCER

"In this honest and humorous solo show, award-winning artist Shane Shambhu combines Indian dance and laugh-out-loud comedy to lead audiences on a revealing journey of his life growing up in London, from unlikely dance student to 'rude boy' to international performer."

**15 November:** Charmouth Primary School, CHARMOUTH, DT6 6LR.  
7.30pm. £10 / £6. 07967 759135 / artsreach.co.uk.

### THE ESKIES + BLACK WATER COUNTY

**10 November**  
The Beehive, Dowell Street, HONITON,  
EX14 1LZ. 8.30pm. £14 / £12. 01404  
384050 / beehivehoniton.co.uk.

### SIMON EVANS: 'GENIUS 2.0'

**10 November**  
Dorchester Arts, The Corn Exchange,  
High East Street, DORCHESTER, DT1  
1HF. 8pm. £15 / £13 / £5.  
dorchesterarts.org.uk. Comedy.



### FRIGG: 'FINNISH FIDDLES'

**10 November**  
Strode Theatre, Church Road, STREET,  
BA16 0AB. 7.30pm. £16.50 / £15.50 /  
£12.50. strodetheatre.org.uk. "A  
leading act on the Nordic music scene,  
Frigg have dazzled audiences all  
around the world with their fiddle-  
based Nordgrass sound. Don't miss this  
blizzard of jigs, reels, polkas, waltzes  
and bluegrass inventions."

### MORGAN AND WEST

**11 November**  
Dorchester Arts, The Corn Exchange,  
High East Street, DORCHESTER, DT1  
1HF. 2 and 7.30pm. £8 / £6. 01305  
266926. "Jaw-dropping, brain-bursting,  
gasp-eliciting feats of magic."

### BOURNEMOUTH SYMPHONY ORCHESTRA: 'ALWAYS REMEMBERED'

**11 November**  
Lighthouse, Kingland Road, POOLE,  
BH5 1UG. 4pm. lighthouse.co.uk.

### LINDISFARNE

**11 November**  
Cheese & Grain, Market Yard, FROME,  
BA11 1BE. 7.30pm. £22 / £19. 01373  
455420 / cheeseandgrain.com.

### 'THE GATHERING: MESSAGES FROM THE GREAT WAR'

**11 November**  
Village Hall, BRIANTSPUDDLE, DT2  
7HT. 3pm. £12 / £9. 01929 471002 /  
artsreach.co.uk. See 9 November.

### RUTH ROYALL

**11 November**  
Frome Jazz Club, 1 Christchurch Street  
East, FROME, BA11 1QA. 7pm. Free  
entry. 01373 472042. Jazz.

### 'SILENCE'

**13 - 17 November**  
The Salberg, Salisbury Playhouse,  
Malthouse Lane, SALISBURY, SP2 7RA.  
7.45pm. £13.50 / £9. 01722 320333 /  
wiltshirecreative.co.uk. "Nicola  
Werenowska's funny and fascinating  
new play hurtles between Warsaw and  
London over two decades and three  
generations of a Polish / British family."

### 'RUM IN THE GRAVY BOAT'

**14 November**  
Dorchester Arts, The Corn Exchange,  
High East Street, DORCHESTER, DT1  
1HF. 7pm. £10 / £8. 01305 266926.

### BOURNEMOUTH SYMPHONY ORCHESTRA: 'ROMANTIC FROM START TO FINISH'

**14 November**  
Lighthouse, Kingland Road, POOLE,  
BH5 1UG. 7.30pm. lighthouse.co.uk.

### 'BLOOMING OUT'

**15 and 16 November**  
The Lyric Theatre, BRIDPORT, DT6 3LX.  
8pm. £12 / £5.  
bridportandwestbay.co.uk. "Brazilian  
collective Nos Three present a  
clowning performance that uses only  
non-verbal language to explore some  
of the most intriguing moments in a  
feminine universe - in essence, a  
celebration of being a woman."

OTHER  
SIDE



## DUKE GARWOOD

SATURDAY 15TH DECEMBER

Doors 7pm, Start 8pm

"Duke Garwood's music has an otherworldly, beady quality suggesting  
sun-baked desert days, croc-skin boots and a Chevrolet gently rolling  
along empty highways" *The Guardian*

Tickets £10 in advance from [www.other-side.eventbrite.co.uk](http://www.other-side.eventbrite.co.uk)

CHURCH STUDIO HAYDON DORSET DT9 5JB

A series of talks, live performances and screenings  
+ food and drink of an interesting ilk

In association with

EVOLVER  
THE VOICES AFTER AND BETWEEN THEM

DENMAN  
+ GOULD

SHERBORNE  
TIMES



## OCTAGON THEATRE

### BEAUTY AND THE BEAST

SATURDAY 3 NOVEMBER

Join Ballet Theatre UK for one of the  
most enchanting love stories of all time,  
Beauty and the Beast.

### DANCE DANCE DANCE 2018

SATURDAY 17 NOVEMBER

Talented local performance groups will  
take to the stage for an action packed  
evening of dance!

### THE ENORMOUS TURNIP

SUNDAY 18 NOVEMBER

Mr and Mrs Chickweed's amazing prize-  
winning vegetables have taken over  
everything...

### SHOW OF HANDS: JOINT VENTURE

WEDNESDAY 21 NOVEMBER

Steve Knightley, Phil Beer and Miranda  
Sykes look a little different for their  
2018 Joint Venture tour.

### ALADDIN

FRIDAY 7 DECEMBER - SUNDAY 6

JANUARY

Don't miss our hilarious, fun-packed  
family pantomime!

BOX OFFICE: 01935 422884

BOOK ONLINE:

[www.octagon-theatre.co.uk](http://www.octagon-theatre.co.uk)

OCTAGON THEATRE

Hendford, Yeovil, Somerset BA20 1UX





evolvermagazine

## PERFORMANCE



### GIGSPANNER BIG BAND

"Gigspanner, formed by ex-Steeleye Span's legendary fiddle player Peter Knight, appear here as the Gigspanner Big Band - a rare but highly sought-after affair."

**22 November:** Holy Trinity Church, Stallard Street, TROWBRIDGE, BA14 9AJ. 7.30pm. £18. 01225 774306 / townhallarts.co.uk.

#### PETER GILL: 'MEET TOMMY ATKINS'

**16 November**

Jubilee Hall, YETMINSTER, DT9 6LQ. 7.30pm. £10 / £5. artsreach.co.uk.

#### JACKIE OATES

**16 November**

Pound Arts Centre, Pound Pill, CORSHAM, SN13 9HX. 7.30pm. £15 / £13. poundarts.org.uk. Folk.

#### THE DUTTY MOONSHINE BIG BAND

**16 November**

SWX, 15 Nelson Street, BRISTOL, BS1 2JY. 7pm. £15. 0117 945 0325 / swxbristol.com. "14-piece jazz trained big band fronted by grime MCs playing everything from huge garage bangers to jazz covers."

#### THE KOSMOS ENSEMBLE

**16 November**

Salisbury Arts Centre, Bedwin Street, SALISBURY, SP1 3UT. 8pm. £18 / £16. 01722 320333 / wiltshirecreative.co.uk. "Gypsy, Scottish, Jewish and Greek music glide into hot-blooded tango and Japanese melody."

#### AFRO CELT SOUND SYSTEM

**16 November**

Lighthouse, Kingland Road, POOLE, BH5 1UG. 8pm. lighthouse.co.uk. "Afro Celt Sound System's acclaimed live performances are energetic and captivating and innovatively combine folk traditions of different cultures to breath-taking effect."

#### JOHN LAW & JAMES AGG

**16 and 17 November**

Tincton Gallery, The Old School House, Tincton, nr Dorchester, DT2 8QR. 7.30pm. £12. 01305 848909 / tinctongallery.com. "Intimate jazz and classical music, infusing life into beautiful melodies and compositions from the jazz and classical repertoire."

#### BOURNEMOUTH SYMPHONY ORCHESTRA: 'SMOOTH CLASSICS 2'

**17 November**

Lighthouse, Kingland Road, POOLE, BH5 1UG. 7.30pm. lighthouse.co.uk.

#### RANJANA GHATAK & BAND

**17 November**

Village Hall, BUCKLAND NEWTON, DT2 7BZ. 7.30pm. £10 / £6. 01300 345455 / artsreach.co.uk.

#### SARAH MUNRO

**17 November**

Salisbury Arts Centre, Bedwin Street, SALISBURY, SP1 3UT. 8pm. £15 / £12. 01722 320333 / wiltshirecreative.co.uk. "22-year-old singer-songwriter and guitarist."

#### SHEELANAGIG

**17 November**

Pound Arts Centre, Pound Pill, CORSHAM, SN13 9HX. 7.30pm. £15 / £13. 01249 701628 / poundarts.org.uk. "Foot-stomping folk tunes."

#### DORSET POLICE MALE VOICE CHOIR

**17 November**

Martock Church, MARTOCK, TA12 6JL. 7.30pm. £9 / £8. 07955 467896 / 07955 467896 / martockonline.co.uk.



#### MIDDLE KIDS

**17 November**

The Louisiana, Wapping Road, Bathurst Terrace, BRISTOL, BS1 6UA. 7.30pm. £10. 0117 926 5978. "Australian trio."

#### 'THE HOTEL EXPERIENCE'

**17 November**

The Edge, University of Bath, Claverton Down, BATH, BA2 7AY. 7.30pm. £12 / £8. edgearts.org. Dance.

#### 'THE LIFE AND LOVES OF CLAUDE DEBUSSY'

**18 November**

Dorchester Arts, The Corn Exchange, High East Street, DORCHESTER, DT1 1HF. 7pm. £24 / £22. 01305 266926.

#### RANJANA GHATAK & BAND

**18 November**

Village Hall, PORTESHAM, DT3 4NS. 7.30pm. £10 / £6. artsreach.co.uk.

#### 'LAUGHS AT THE LYRIC'

**20 November**

The Lyric Theatre, BRIDPORT, DT6 3LX. 8pm. the-lyric.com. Comedy.

# DorchesterARTS



CLASSICAL MUSIC

**LUCY PARHAM**  
THE LIFE AND LOVES OF  
CLAUDE DEBUSSY  
SUNDAY 18 NOVEMBER

"One of the must see events  
on the musical calendar"  
BBC Music Magazine



CLASSICAL MUSIC

**HMS PINAFORE**  
OPERA ANYWHERE  
SAT 24 - SUN 25 NOVEMBER

"...the young singers bring rich tones and  
harmony to the work along with  
impressive acting skills."  
Dorset Echo (on The Mikado)



THEATRE / DANCE

**THIS REALLY IS TOO MUCH**  
GRACEFOOL COLLECTIVE  
WEDNESDAY 28 NOVEMBER

"a remarkable, genre-defying  
performance, superbly written and  
fantastically performed"



THEATRE

**THE NATIVITY**  
LIVING SPIT  
SATURDAY 8 DECEMBER

A cornucopia of comic Christmassy  
crudeness that you'll never forget!  
Not for the faint-hearted...

For full event listings, visit our website

Dorchester Arts, The Corn Exchange, High East Street, Dorchester DT1 1HF

Facebook Twitter Instagram @Dorchesterarts | 01305 266926 | www.dorchesterarts.org.uk | Charity No. 1015546



# PERFORMANCE

## 'OTHELLO'

**20 - 24 November**

Lighthouse, Kingland Road, POOLE, BH5 1UG. 7.30pm (Wednesday and Saturday matinees 2.30pm). 01202 280000 / lighthouse.co.uk.

## MIKE DENHAM SPEAKEASY WITH MICHAEL MCQUAID

**21 November**

Dorchester Arts, The Corn Exchange, High East Street, DORCHESTER, DT1 1HF. 8pm. £14 / £12. 01305 266926 / dorchesterarts.org.uk.

## 'FINDING JOY'

**21 November**

Tacchi-Morris Arts Centre, School Road, TAUNTON, TA2 8PD. 7.30pm. £15 / £13 / £9. 01823 414141 / tacchi-morris.com. "Approaching dementia with humour and humanity, rebellious and bright Danny decides to look after his feisty and dance-loving Grandma, Joy. Is their shared playfulness and growing love enough to face the challenges ahead?"

## 'CINDERELLA'

**21 November**

Salisbury Arts Centre, Bedwin Street, SALISBURY, SP1 3UT. 7.30pm. £18 / £14. 01722 320333 / wiltshirecreative.co.uk. "Ballet Cymru presents a sparkling and refreshing ballet based on the eternal fairy tale."

## DORCHESTER PIANO QUARTET

**22 November**

Dorchester Arts, The Corn Exchange, High East Street, DORCHESTER, DT1 1HF. 1pm. Free entry. 01305 266926 / dorchesterarts.org.uk.

## 'MY DEAREST GIRLS'

**22 - 24 November**

The Salberg, Salisbury Playhouse, Malthouse Lane, SALISBURY, SP2 7RA. 7.45pm. £13.50 / £9. 01722 320333 / wiltshirecreative.co.uk. "Francesca Millican-Slater creates a brand new piece based on the real letters sent between a group of six Shropshire women between 1917 and 1920."

## 'ROBIN HOOD AND OTHER ENGLISH RADICALS'

**23 November**

Village Hall, CHETNOLE, DT9 6NU. 7.30pm. £10 / £6. 01935 873555 / artsreach.co.uk. "To live outside the law you must be honest. Two of Britain's leading storytellers, Hugh Lupton and Nick Hennessey, sing and tell their way deep into the secret, dappled heart of Sherwood and at the same time, tell the true and harsher histories of English dissenters, tricksters and radicals."



## NATACHA ATLAS

"Natacha Atlas is a superstar on the world music scene, known for fusing Arabic and Western music. She plays the intimate confines of the Sherling Studio at Lighthouse as part of a very rare UK tour - her first for eight years. Early booking advised."

**9 November:** Lighthouse, Kingland Road, POOLE, BH5 1UG. 8pm. 01202 280000 / lighthouse.co.uk.

## 'TO HELL IN A HANDBAG'

**23 November**

Dorchester Arts, The Corn Exchange, High East Street, DORCHESTER, DT1 1HF. 8pm. £13 / £11 / £5. 01305 266926 / dorchesterarts.org.uk.

## JEAN TOUSSAINT QUARTET

**23 November**

Lighthouse, Kingland Road, POOLE, BH5 1UG. 8pm. 01202 280000 / lighthouse.co.uk. Jazz.

## 'TRUTH'

**23 November**

Bridport Arts Centre, South Street, BRIDPORT, DT6 3NR. 7.30pm. 01308 424204 / bridport-arts.com. "Beautiful and thought-provoking song theatre show exploring the once-simple notion of truth in our messy modern age of fake news."

## STEVEN OSBORNE

**23 November**

St Michael's Church, Milverton, St Michael's Hill, MILVERTON, TA4 1JS. 7.30pm. £18 / £16 / £10 / £2. 03336 663366 / milvertonconcerts.org. Piano recital.

## 'CROSSINGS'

**23 November**

Village Hall, DURWESTON, DT11 0QA. 7.30pm. £10 / £6. 01258 488883.

## CAMO CLAVE

**24 November**

Bocabar, The Red Brick Building, Morland Road, GLASTONBURY, BA6 9EW. 8pm. £8 / £6. 01458 440558 / glastonburybocabar.co.uk. "An electro tropical band combining traditional Latin American rhythms with electro beats."

## 'THE MEETING' + 'VESTIGE'

**24 November**

The Edge, University of Bath, Claverton Down, BATH, BA2 7AY. 7.30pm. £12 / £8. 01225 386777 / edgearts.org. "Wayne Parsons Dance presents a sensitive and rousing double bill exploring the theme of memory."

## WORRY DOLLS + JAKE MORRELL

**24 November**

The Beehive, Dowell Street, HONITON, EX14 1LZ. 8pm. £14 / £12. 01404 384050 / beehivehoniton.co.uk. "Compelling duo and multi-instrumentalists Zoe Nicol and Rosie Jones have a new sound, blending the tender urgency of Zoe's Irish-influenced voice with the fiery integrity of Rosie's vocals and rhythmic guitar."

## PHILIPPA MO

**24 November**

Sladers Yard, West Bay Road, WEST BAY, Bridport, DT6 4EL. 6.30pm. £15. 01308 459511 / sladersyard.co.uk. "Internationally acclaimed British violinist Philippa Mo plays Bach's Sonata No.2 for A Minor with baroque and contemporary dances and fantasias."

## 'ROBIN HOOD AND OTHER ENGLISH RADICALS'

**24 November**

United Reform Church Hall, BLANDFORD, DT11 7BQ. 7.30pm. £10 / £6. 01258 452074. See 23 November.

## 'CROSSINGS'

**24 November**

Village Hall, TOLLER PORCUM, DT2 0DT. 7.30pm. £9 / £6. 01300 320373 / artsreach.co.uk.

## KIKI DEE AND CARMELO LUGGERI

**24 November**

Pound Arts Centre, Pound Pill, CORSHAM, SN13 9HX. 8pm. £18 / £16. 01249 701628 / poundarts.org.uk.

## 'REMEMBRANCE 100 YEARS'

**24 November**

St John's Church, WELLINGTON, TA21 8QY. 7.30pm. £12. 01823 667919 / wellingtonchoralsociety.org.uk. "Join Wellington Choral Society to commemorate the centenary of the end of World War I and all conflicts since, with poetry, organ music and choral singing."

## 'HMS PINAFORE'

**24 and 25 November**

Dorchester Arts, The Corn Exchange, High East Street, DORCHESTER, DT1 1HF. 01305 266926 / dorchesterarts.org.uk. Opera.

BRIDPORT TIMES  
A MONTHLY CELEBRATION OF PEOPLE, PLACE AND PURVEYOR  
A GOOD YEAR

BRIDPORT TIMES  
A MONTHLY CELEBRATION OF PEOPLE, PLACE AND PURVEYOR  
OUT NOW AND ONLINE  
bridporttimes.co.uk



# PERFORMANCE

## 'ROBIN HOOD AND OTHER ENGLISH RADICALS'

**25 November**

Village Hall, SANDFORD ORCAS, DT9 4RX. 7.30pm. £10 / £6. 01963 220208 / artsreach.co.uk. See 23 November.

## SWANAGE JAZZ MACHINE

**25 November**

Grand Hotel, Burlington Road, SWANAGE, BH19 1LU. 2pm. 01929 423353.

## 'FINDING JOY'

**27 November**

Lighthouse, Kingland Road, POOLE, BH5 1UG. 8pm. 01202 280000 / lighthouse.co.uk. See 21 November.

## DANIEL SLOSS: 'X'

**28 November**

Lighthouse, Kingland Road, POOLE, BH5 1UG. 8pm. lighthouse.co.uk. Comedy.

## BOURNEMOUTH SYMPHONY ORCHESTRA: 'UNMISTAKABLE VOICES'

**28 November**

Lighthouse, Kingland Road, POOLE, BH5 1UG. 7.30pm. lighthouse.co.uk.



## 'INTRONAUTS'

**29 November**

Shelley Theatre, Shelley Manor, Beechwood Avenue, BOURNEMOUTH, BH5 1LX. 7.30pm. £12 / £10. 01202 413600 / shelleytheatre.co.uk. "Green Ginger's new show will propel audiences into a microscopic journey deep within the human body. It tells a madcap story about advancing technology, big syringes and a tiny submarine. Taking its cue from classic sci-fi movies, and fueled by absurd visual comedy and innovative puppetry, Intronauts offers an intoxicating inner body experience that is out of this world."

## PIP UTTON: 'AT HOME WITH SHAKESPEARE'

**29 November**

Springhead, FONTMELL MAGNA, SP7 0NU. 7.30pm. £10 / £8. 01747 811853 / artsreach.co.uk. See 9 November.



## SHOW OF HANDS

"Show of Hands return to the theatre and concert circuit on a quest to reveal a fuller sound for the trio's bold new studio album."

**21 November:** Octagon Theatre, Hendford, YEOVIL, BA20 1UX. 7.30pm. 01935 422884 / octagon-theatre.co.uk.

**1 December:** Lighthouse, Kingland Road, POOLE, BH5 1UG. 7.30pm. 01202 280000 / lighthouse.co.uk.

## 'SCRATCH NIGHT'

**29 November**

Lighthouse, Kingland Road, POOLE, BH5 1UG. 6.30pm. 01202 280000 / lighthouse.co.uk. "A night of explosive new work from local trans, non-binary and gender queer artists."

## TANKUS THE HENGE + JESS MCALLISTER

**30 November**

The Beehive, Dowell Street, HONITON, EX14 1LZ. 8pm. £14 / £11. 01404 384050 / beehivehoniton.co.uk. "Tankus the Henge is the London based, five wheeled, funk fuelled, open top, custom paint job, rock'n'roll jalopy that comes careering round the corner on a tranquil summer's day. Ruining the silence and disturbing the bats."

## 'INTRONAUTS'

**30 November**

Marine Theatre, Church Street, LYME REGIS, DT7 3QB. 7.30pm. £12 / £10. 01297 442138 / marinetheatre.com. See 29 November.

## KAJA DRAKSLER

**30 November**

Bridport Arts Centre, South Street, BRIDPORT, DT6 3NR. 8pm. £14 / £12. 01308 424204 / bridport-arts.com. "Kaja is a remarkable, precociously talented Slovenian pianist, based in Amsterdam, whose formidable technique, expressive powers and exploratory use of the entire instrument, including prepared sounds and percussive effects, produce breathtaking performances."

## 'THE FROG & THE PRINCESS'

**30 November**

Royal Manor Theatre, PORTLAND, DT5 1LT. 6pm. £6 / £5. artsreach.co.uk.

## 'BEAUTY AND THE BEAST'

**30 November**

Tacchi-Morris Arts Centre, School Road, TAUNTON, TA2 8PD. 7.30pm. £16 / £11. tacchi-morris.com. Ballet.

## 'THE RAGGED TROUSERED PHILANTHROPISTS MAGIC LANTERN SHOW'

**30 November**

Village Hall, BROADMAYNE, DT2 8EW. 7.30pm. £9 / £6. artsreach.co.uk.

## 'KING FOR A DAY: THE NAT KING COLE STORY'

**30 November**

Dorchester Arts, The Corn Exchange, High East Street, DORCHESTER, DT1 1HF. 8pm. £18 / £16. 01305 266926.



## ZOE GILBY QUARTET

**30 November**

Ilminster Arts Centre, The Meeting House, East Street, ILMINSTER, TA19 0AN. 8pm. £16. 01460 54973 / themeeetinghouse.org.uk.

## BARNSTORMERS COMEDY NIGHT

**30 November**

Salisbury Arts Centre, Bedwin Street, SALISBURY, SP1 3UT. 8.30pm. £12 / £11. wiltshirecreative.co.uk.

## 'BULLISH'

**30 November and 1 December**

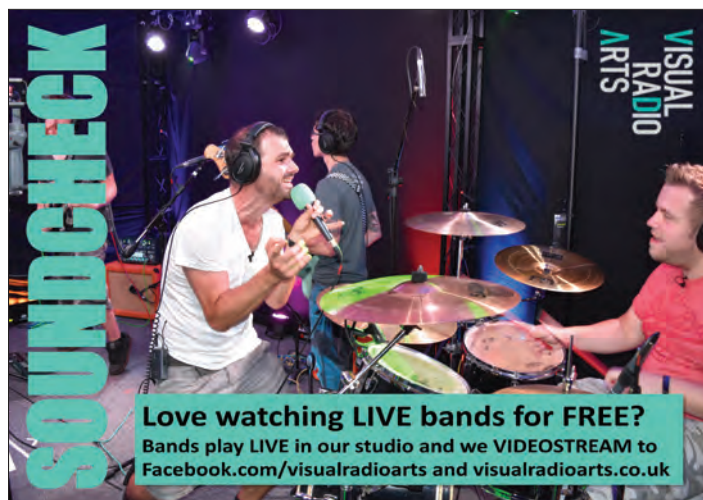
Lighthouse, Kingland Road, POOLE, BH5 1UG. 8pm. 01202 280000 / lighthouse.co.uk. "Bullish pits ancient mythology against modern gender navigation to furiously disrupt, traverse and rewrite the rulebook. Stepping into the ring with a gender fierce ensemble of hoppers and renegades, Bullish is a story about packing, passing, and gambling your way out of the labyrinth."

## SUBSCRIBE TO EVOLVER

£24 (6 issues starting with EVOLVER 109 (January / February 2019 issue))

NAME
ADDRESS
POSTCODE

Send cheque (payable to 'Evolver Media') to:  
EVOLVER MEDIA, 8 BUCKLAND ROAD, PEN MILL TRADING ESTATE,  
YEOVIL, SOMERSET BA21 5EA



**Love watching LIVE bands for FREE?**

Bands play LIVE in our studio and we VIDEOSTREAM to  
Facebook.com/visualradioarts and visualradioarts.co.uk





## NOBLE JACKS

**7 December:** Pound Arts Centre, Pound Pill, CORSHAM, SN13 9HX. 8pm. £15 / £13. 01249 701628 / poundarts.org.uk.

### NEVERGLADE: 'FESTIVUS RIDIKULUS'

**1 December**

Bocabar, The Red Brick Building, Morland Road, GLASTONBURY, BA6 9EW. 8pm. £10 / £7.50. 01458 440558 / glastonburybocabar.co.uk. "A festival experience in the heart of winter. 2 rooms of DJs."

### 'THE FROG & THE PRINCESS'

**1 December**

Village Hall, LANGTON MATRAVERS, BH19 3HA. 11am. £6 / £5. 01929 423834.

### 'THE FROG & THE PRINCESS'

**1 December**

Village Hall, PORTESHAM, DT3 4NS. 6pm. £6 / £5. 01305 871035.

### 'THE RAGGED TROUSERED PHILANTHROPISTS MAGIC LANTERN SHOW'

**1 December**

Gillingham Library, GILLINGHAM, SP8 4UA. 7.30pm. £10 / £6. 01747 822180.



### 'BRILLIANCE'

**1 December**

Trowbridge Town Hall, Market Street, TROWBRIDGE, BA14 8EQ. 7.30pm. £11 / £9. townhallarts.co.uk. "1948 and 1963, winter. Everyone is gathering in the village hall. Lightning has struck the hall roof. Mrs Atkinson has called the repairman who comes with his daughter..."

### 'I'M BITTER ABOUT GLITTER' + 'DEUCE'

**1 December**

Lighthouse, Kingland Road, POOLE, BH5 1UG. 5.30pm. lighthouse.co.uk.

### 'A NIGHT FOR DOROTHY'

**1 December**

The Lamb Inn, Mortimer Street, TROWBRIDGE, BA14 8BN. 8pm. £10. villagepump.org.uk.

### WESSEX YOUTH ORCHESTRA: 'WESSEX WINTERFEST'

**2 December**

Lighthouse, Kingland Road, POOLE, BH5 1UG. 3pm. 01202 280000 / lighthouse.co.uk. "Join the Wessex Youth Orchestra and ensembles from the Centre for Wessex Young Musicians for a heart-warming afternoon of festive winter favourites."

### 'THE RAGGED TROUSERED PHILANTHROPISTS MAGIC LANTERN SHOW'

**2 December**

Village Hall, SHIPTON GORGE, DT6 4NA. 7.30pm. £9 / £6. 01308 897407 / artsreach.co.uk.

### MARTIN TAYLOR AND MARTIN SIMPSON

**2 December**

Halsway Manor, Halsway Lane, near CROWCOMBE, TA4 4BD. 7pm. £20. halswaymanor.org.uk. "An unmissable evening with two guitar playing legends working in harmony."

### 'THE FROG & THE PRINCESS'

**2 December**

Village Hall, CERNE ABBAS, DT2 7GY. 3pm. £6 / £5. artsreach.co.uk.

### BOURNEMOUTH SYMPHONY ORCHESTRA: 'RUSSIAN WINTER'

**5 December**

Lighthouse, Kingland Road, POOLE, BH5 1UG. 7.30pm. lighthouse.co.uk.

### JOHN WILSON & THE JOHN WILSON ORCHESTRA

**6 December**

Lighthouse, Kingland Road, POOLE, BH5 1UG. 7.30pm. 01202 280000.

### THE UNRAVELLING WILBURYS

**6 December**

Pound Arts Centre, Pound Pill, CORSHAM, SN13 9HX. 7.30pm. £14 / £12. 01249 701628 / poundarts.org.uk.

### SOUND OF THE SIRENS + SAMANTICS

**7 December**

The Beehive, Dowell Street, HONITON, EX14 1LZ. 8pm. £11. 01404 384050 / beehivehoniton.co.uk. "Exeter-based duo Abbe Martin and Hannah Wood dovetail beautifully."

### 'UNSIGNED'

**7 December**

Trowbridge Town Hall, Market Street, TROWBRIDGE, BA14 8EQ. 7.30pm. £4. 01225 774306 / townhallarts.co.uk. See 2 November.

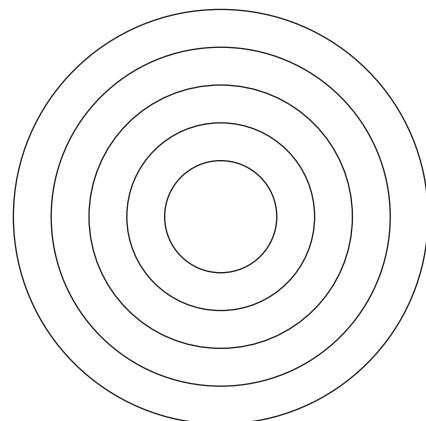


picture framing  
fine art printing  
exhibition services

www.mount-art.co.uk | info@mount-art.co.uk | 01373 473894

## EVOLVER 109

January and February 2019





# PERFORMANCE

## 'POETRY AND MUSIC'

**7 December**

Sladers Yard, West Bay Road, WEST BAY, BRIDPORT, DT6 4EL. 8pm. £12.50. 01308 459511 / sladersyard.co.uk. "Poet Ann Gray joins Pam Zinnemann-Hope and early music performer Frances Eustace."

## MAD DOG MCREA

**7 December**

Dorchester Arts, The Corn Exchange, High East Street, DORCHESTER, DT1 1HF. 8pm. £16 / £14 / £5. 01305 266926 / dorchesterarts.org.uk.

## MIKE DENHAM'S SPEAKEASY

**7 December**

Ilminster Arts Centre, The Meeting House, East Street, ILMINSTER, TA19 0AN. 8pm. £14. 01460 54973 / themeeetinghouse.org.uk. "A tribute to Bessie Smith, with the blues singer Julia Titus and special guest, trumpeter Steve Graham. Unmissable vintage jazz."

## TOM LEWIS

**7 December**

The Lamb Inn, Mortimer Street, TROWBRIDGE, BA14 8BN. 8pm. £10. villagepump.org.uk. "Songs of life at sea from a retired sub-mariner."

## TERRY SEABROOK'S MILESTONES: 'KIND OF BLUE'

**7 December**

Lighthouse, Kingland Road, POOLE, BH5 1UG. 8pm. 01202 280000 / lighthouse.co.uk.

## DUNCAN HONEYBOURNE AND KATHARINE LAM

**7 and 8 December**

Tincton Gallery, The Old School House, Tincton, nr Dorchester, DT2 8QR. 7.30pm. £12. 01305 848909 / tinctongallery.com. "Works for two pianos and piano duet."

## MOSCOW DRUG CLUB

**8 December**

Lighthouse, Kingland Road, POOLE, BH5 1UG. 8pm. 01202 280000 / lighthouse.co.uk. "An intoxicating and intimate musical experience."

## 'LEGEND: THE MUSIC OF BOB MARLEY'

**8 December**

Weymouth Pavilion, The Esplanade, WEYMOUTH, DT4 8ED. 8pm. 01305 783225 / weymouthpavilion.com. "This two-hour rasta spectacular, showcasing the magic of Marley, will leave audiences on a natural high."



## BSO SYMPHONIC BRASS

"The quintet of Bournemouth Symphony Orchestra musicians will herald in the autumn season with stunning majesty and groove."

**13 December:** Gillingham School, GILLINGHAM, SP8 4QR. 7.30pm. £10 / £6. 01747 833844 / artsreach.co.uk.

## 'THE MATTHEW ROBINS CHRISTMAS SHOW'

**8 and 9 December**

The Lyric Theatre, BRIDPORT, DT6 3LX. 7pm / 6pm. £6 / £10 / £12. bridportandwestbay.co.uk. "An off the wall collection of songs, short stories, shadow-puppets, home-made animations, made-up games, choose-your-own-adventures, and competitive audience puppet-making. It's a bit like a one-man variety show!"

## THE BEEHIVE ACOUSTIC CAFÉ

**12 December**

The Beehive, Dowell Street, HONITON, EX14 1LZ. 8pm. Free entry. 01404 384050 / beehivehoniton.co.uk.

## BOURNEMOUTH SYMPHONY ORCHESTRA: 'HANDEL'S MESSIAH'

**12 December**

Lighthouse, Kingland Road, POOLE, BH5 1UG. 7.30pm. lighthouse.co.uk.

## TORI REED

**13 December**

The Lyric Theatre, BRIDPORT, DT6 3LX. 8pm. bridportandwestbay.co.uk. "New Zealand born contemporary, country, folk, singer songwriter."

## BSO SYMPHONIC BRASS

**14 December**

Village Hall, Chetnole, DT9 6NU. 7.30pm. 01935 873555. £10 / £6. artsreach.co.uk. See 13 December.

## PETITES ANNONCES

**14 December**

Bridport Arts Centre, South Street, BRIDPORT, DT6 3NR. 8pm. £10. 01308 424204 / bridport-arts.com. "Gypsy jazz."



## THE MAGNIFICENT 7 JAZZ BAND

**14 December**

Ilminster Arts Centre, The Meeting House, East Street, ILMINSTER, TA19 0AN. 8pm. £20. 01460 54973 / themeetinghouse.org.uk.

## THE STANDING WAVES + SADIE HORLER

**14 December**

The Beehive, Dowell Street, HONITON, EX14 1LZ. 8pm. £12 / £10. 01404 384050 / beehivehoniton.co.uk.

## MAIASTRA STRING QUARTET

**15 December**

Ilminster Arts Centre, The Meeting House, East Street, ILMINSTER, TA19 0AN. 7.30pm. £15. 01460 54973.

## BOWIE EXPERIENCE: 'THE GOLDEN YEARS TOUR'

**15 December**

Lighthouse, Kingland Road, POOLE, BH5 1UG. 7.30pm. lighthouse.co.uk.

## SWANAGE JAZZ MACHINE

**16 December**

Grand Hotel, Burlington Road, SWANAGE, BH19 1LU. 2pm. 01929 423353.

## 'ANNIE'

**17 and 18 December**

Bridport Arts Centre, South Street, BRIDPORT, DT6 3NR. 7.30pm. £10 / £6. 01308 424204 / bridport-arts.com. "With a cast and production team all 25 and under, this is Bridport Young Performer's Scholarship's eighth Christmas show."

## MAD DOG MCREA + BEANS ON TOAST

**20 December**

The Beehive, Dowell Street, HONITON, EX14 1LZ. 8pm. £18 / £16.50. 01404 384050 / beehivehoniton.co.uk.

## 'LOST LORE'

**21 and 22 December**

Dorchester Arts, The Corn Exchange, High East Street, DORCHESTER, DT1 1HF. 7pm, Saturday matinee 4pm. £12 / £10. 01305 266926. "Using breath-taking sound design and enchanting animation, Lost Lore will transport you to a world of witches, princesses, tricksters and sorcery. Wrap up warm, bring along a blanket and gather around the fire for a spellbinding and unforgettable journey."

## 'COASTAL COMEDY'

**22 December**

Lighthouse, Kingland Road, POOLE, BH5 1UG. 8pm. lighthouse.co.uk.

## 'LAND OF NOD'

**22 December**

Trowbridge Town Hall, Market Street, TROWBRIDGE, BA14 8EQ. 11am and 3pm. £10 / £8. 01225 774306. "Moon On A Stick blend puppetry, captivating storytelling and an enchanting musical score in this star-light adventure."

4 COLOURS  
to make a  
THOUSAND  
SHADES

#COLOURINGYOURFUTURE

**S&G**  
STEPHENS & GEORGE  
PRINT GROUP

WWW.STEPHENSANDGEORGE.CO.UK  
01685 388888 | SALES@STEPHENSANDGEORGE.CO.UK

GOAT MILL ROAD | DOWLAIS | MERTHYR TYDFIL | CF48 3TD

FOLLOW US ON TWITTER @SandGPrintGroup



# CLASSIFIEDS

## OPPORTUNITIES

● **Transition: Call For Proposals.** Transition is an opportunity for artists, or artist groups, to use the gallery space at Newlyn Art Gallery to consider how a series of works is developing or to try out ideas for an installation or interactive project. Each artist will be given a week-long slot in either the lower gallery or the upper gallery, with a total of eight artists (or groups of artists) participating over the four weeks. In-house support, some AV equipment and a small budget of £300 per project that can be used towards transport / travel / materials will be available. We can also provide advice / assistance with finding accommodation, if required. Deadline: 19 November 2018. [newlynartgallery.co.uk/activities/transition-2019/](http://newlynartgallery.co.uk/activities/transition-2019/) 01736 363715 / [blair.todd@newlynartgallery.co.uk](mailto:blair.todd@newlynartgallery.co.uk).

● **Are you a maker or artist looking for a new workshop space in a creative and supportive environment?** Walford Mill Crafts on the edge of Wimborne is an established craft centre with a shop, gallery and a number of on-site makers, some of whom are just starting their practice. Work is now underway to turn the first floor of the historic mill building into studio space for yet more creatives. If you are interested in finding out more, contact Anne Hitchcock or Carol-Anne Savage on 01202 841400 or email [info@walfordmillcrafts.co.uk](mailto:info@walfordmillcrafts.co.uk).

● **Open call for Vegan Artists:** Do you use your artistic practice to speak about the exploitation of non-human animals, or perhaps you use it to highlight the positives of a vegan lifestyle? If so, Liberation Arts invites you to submit your work to this event. The Liberation Arts Festival is a three day event taking place in the Paintworks venue in Bristol from 9 to 11 February 2019. The festival aims to promote veganism through arts and culture and features creative workshops, art stalls, talks, performance art, and (some) food stalls. Deadline: Saturday 15 December 2018. Fee £15. [liberationarts.co.uk/](http://liberationarts.co.uk/) aisha.20@hotmail.co.uk.

● **Methods Making Madness: Young Photographers Competition.** A competition for young photographers: 14 - 21 year olds, living in the South West. Capture the essence and process of creation: a maker, artist, or element of nature - the mess, the mistakes or the progression to perfection. An exhibition of chosen entries based on this theme will run from 3 May - 30 June 2019 at Devon Guild of Craftsmen, Riverside Mill, Bovey Tracey, Devon, TQ13 9AF. Deadline: Monday 31 December 2018. [crafts.org.uk / makingmethods19@gmail.com](http://crafts.org.uk/makingmethods19@gmail.com) / 01626 832223.

● **Lead Technician:** The University of Bath's Office for the Arts organises programmes for both public and campus engagement. We are seeking an experienced, capable and conscientious individual to lead technical delivery at our campus venues The Edge and Andrew Brownsword Gallery. Deadline: Sunday 11 November 2018. [edgearts.org / p.buschinelli@bath.ac.uk](mailto:edgearts.org/p.buschinelli@bath.ac.uk).

● **Volunteer at The Beehive, Honiton:** Would you like to work as part of The Beehive team? We have a great group of friendly volunteers and we welcome anyone who feels they may have some spare time or skills that they are happy to share. Deadline: Friday 30 November 2018. [clairebrown@beehivehoniton.co.uk](mailto:clairebrown@beehivehoniton.co.uk) / 01404 384050. [beehivehoniton.co.uk](http://beehivehoniton.co.uk).

● **One Craft is a successful co-operative based in Shepton Mallet.** We are looking for a new jeweller to join our friendly team. Please contact [mcneil.kkas@blueyonder.co.uk](mailto:mcneil.kkas@blueyonder.co.uk) for further details or pop in to the shop and chat to one of us. We are open Monday to Saturday, 10am - 4pm. [www.onecraftgallery.co.uk](http://www.onecraftgallery.co.uk) / 01749 343777.

## WORKSHOPS AND COURSES

● **Printmaking For Beginners.** 6 week courses and weekend workshops available. Learn basic printmaking techniques including linocut, collagraph and drypoint etching, in a relaxed, friendly setting, Christchurch, Dorset. For more information visit [www.artofstartingout.co.uk](http://www.artofstartingout.co.uk) or call 07969 436921.

● **Flux'n'Flame Jewellery School:** Now one of the largest independent jewellery schools in the UK offering an ever expanding range of traditional jewellery making courses from 1 day tasters, weekend courses and weekly classes to a 6 day Summer School and specialist masterclasses. Taught by professional jewellery designers and set in a beautiful purpose built workshop in the heart of the Dorset countryside near Milton Abbas. [www.fluxnflame.co.uk](http://www.fluxnflame.co.uk). For more info please call Jesa on 01258 881690 / 07785 550771.

● **Sshh - We're Drawing!** Creative Retreats for Artists. Location: Aude, Pyrenees. Dates: April, May, June, September, 2019. Duration: 7 nights. Min 5, max 7 / 8 participants. Retreats aren't courses. I offer a structure prioritising 'quiet', self-directed time using the studio workshop and other spaces for reading, writing, thinking. Optional 1:1 tutorials / mentoring / practical support. A group-agreed schedule for discussion is encouraged. We take shared meals. Abundant nature and good walking on the doorstep. Opportunities for off-site working and visits. To express interest and request details, email: [jem.5@icloud.com](mailto:jem.5@icloud.com). Other opportunities: Tutors / groups / holidays, see [www.creative-helix.com](http://www.creative-helix.com).

● **To achieve the best price for your work you need the highest quality prints.** As an award-winning fine art printer we can help you achieve that goal. All prints come with a Certificate of Authenticity and we are the only ArtSure accredited printer in the region. Call John Roland on 01747 852221. [www.salt-of-the-earth.biz](http://www.salt-of-the-earth.biz).

● **Watercolour, acrylic and mixed media workshops** in popular TV artist Marilyn Allis studio near Bere Regis. See [www.marilynallis.com](http://www.marilynallis.com) for more information or to book.

● **Textile Art and Embroidery Tuition** with Jenni Cadman. I offer tuition in Free-Machine Embroidery to all abilities from complete beginners to the more advanced. So whether you have no experience in the technique or would like to refresh and extend your existing skills I can help. Good guidance and advice with projects, finding new directions, portfolio assessments and lots of inspiration given on a one-to-one basis. Please visit my new website for further details: [www.jennicadman.co.uk](http://www.jennicadman.co.uk)

● **Life Drawing, Exeter.** Untutored sessions, Sundays 10am - 12.30pm. £8. 01392 273744 / [adrian@afgwyatt.plus.com](mailto:adrian@afgwyatt.plus.com).

## MISCELLANEOUS

● **For Sale: KB PRESS.** 26" bed - top roller sprung. Set of 3 blankets (excellent condition). Suitable for etching, woodcut, linocut and Monoprint. Free standing floor press designed and made in USA by Scott Berglin (NASA space project engineer). Includes operation manual and full documentation. £3,500. Contact: [info@janetmtchell.co.uk](mailto:info@janetmtchell.co.uk). Can be viewed in South Devon or at Artichoke Press, Brixton, London.

● **Wanted: Classical and Jazz LP records.** Tel: 01458 834102 / 07704 229979 / email: [tonyartony@aol.com](mailto:tonyartony@aol.com).

● **Posture with Attitude, Sophie Larter, Life Model.** Experienced and professional. Based in Somerset, own transport, will travel, Devon / Dorset and beyond. Contact: 07531 703168 or [sophie.ann.larter@gmail.com](mailto:sophie.ann.larter@gmail.com).

● **Experienced professional female model.** Available in Poole and Bournemouth Area. Contact Lilly: 0780 4020 735.

● **Experienced Life Model, own transport, 20 mile radius from Glastonbury, £15/hour.** Jo Waterworth 01458 834405 or [jowaterworth23@hotmail.co.uk](mailto:jowaterworth23@hotmail.co.uk).

● **Affordable website design, help with social media, Mail Chimp newsletters and Wix websites.** DT9 6LA. Anne King: [ipadery@icloud.com](mailto:ipadery@icloud.com) / [ipadery.co.uk](http://ipadery.co.uk) / 01935 872470.

## FREE EVOLVER LISTINGS

**Exhibition and performance listings should be emailed to:** [listings@evolver.org.uk](mailto:listings@evolver.org.uk)

Please supply information (in upper and lower case) in the following order: Event. Date(s). Venue, address (including postcode). Times. Admission fee (if any). Contact number / website. Up to 30 words about the event.

## EVOLVER CLASSIFIEDS

**20p per word • Add £5 for BOX • Add £10 for RED BOX**

1) Email to [classifieds@evolver.org.uk](mailto:classifieds@evolver.org.uk)

2) Send cheque (payable to 'Evolver Media') to:

EVOLVER CLASSIFIEDS, EVOLVER MEDIA, 8 BUCKLAND ROAD, PEN MILL TRADING ESTATE, YEOVIL, SOMERSET BA21 5EA

## Artist's studios to rent in Charlton Mackrell

210 sq metres over two floors set in 1.8 acres.

Lots of natural light. Fully insulated and double glazed.

Toilet, kitchen facilities, phone and internet.

Business rates are applicable, rent negotiable on application.

Please contact Mark or Lucy on 01458 223341

or at [enquiries@markmerer.com](mailto:enquiries@markmerer.com) for more information.



evolvermagazine



## ART CLASS AUTUMN 2018 COURSE The Seasons Art Class

Absolute Beginners to Improvers

14 week course

Three hours, once a week, mornings or afternoons

Step-by-step guidance

Meet new friends - Learn new skills

Weymouth Avenue Pavilion, Dorchester

01747 828296

[www.theseasonsartclass.com](http://www.theseasonsartclass.com)

STARTS SOON - LIMITED SPACES - CALL NOW FOR DETAILS



# EVOLVER SPONSORS AND OUTLETS



**EVOLVER IS AVAILABLE FREE AT THE FOLLOWING WESSEX OUTLETS:**

**ABBOTSBURY:** Dansel Gallery. **AXMINSTER:** Axminster Arts Café, Sublyme Café. **BATH:** Action for Hearing Loss, Art Salon, Bath Artists' Studios, Beaux Arts, David Simon Gallery, Edgar Modern Gallery, Fringe Arts, Holburne Museum of Art, Michael Tippett Centre, Rostra Gallery, University of Bath, Victoria Art Gallery. **BERE REGIS:** Cyril Wood Court. **BLANDFORD:** Bryanston Arts Centre, Forum Café, Forum Framers. **BOURNEMOUTH:** All Fired Up, Artcetera, Flux Art Supplies, Miramar Hotel, Pavilion Dance, Royal Bath Hotel, Russell-Cotes Museum & Art Gallery. **BOWER HINTON:** The Hollies Hotel. **BRADFORD ON AVON:** Wiltshire Music Centre. **BRIDGWATER:** Bridgwater Arts Centre, Clayhills, Engine Room. **BRIDPORT:** Beach & Barnicott, Bridport Arts Centre, Bridport Old Books, Bridport Music, The Bull Hotel, Clocktower Music, Literary and Scientific Institute, Lyric Theatre, St Michael's Studios. **BRISTOL:** Bocabar, Bristol Fine Art, Centrespice, Colston Hall, Create Centre, Folk House, Jamaica Street Artists, Lime Tree Gallery, Bristol Old Vic, PRSC Gallery, RWA, Spike Island, St George's, Tobacco Factory, Trinity Centre, UW, Watershed. **BROADWINDSOR:** Craft & Design Centre. **BRUTON:** Bruton Art Factory, Bruton Castle, At The Chapel, Hauser and Wirth. **BUDLEIGH SALTERN:** Brook Gallery. **BURNHAM ON SEA:** Princess Theatre & Arts Centre, Seabreeze Gallery. **CASTLE CARY:** Bailey Hill Bookshop, Clerkenwell Fine Art, Trowbridge Arts Centre. **CHARD:** Art Café, Barleymow's, Hornsbury Mill Hotel. **CHEDDAR:** Sketch Café. **CHEDDON FITZPAINE:** Hestercombe Gallery. **CHRISTCHURCH:** Hatch Gallery, Hayloft Gallery, Red House Museum, Regent Centre. **CLEVEDON:** Fizz Gallery. **CONGRESBURY:** Church House Designs. **CORFE CASTLE:** Boilerhouse Gallery, Gallery 41, Morton House Hotel. **CORSHAM:** Pound Arts. **CREWKERNE:** Phoenix Books. **CROCKERTON:** Bull Mill Arts. **CROWCOMBE:** Halsway Manor. **CULLOMPTON:** Cullompton Community College. **CULMSTOCK:** The Strand Stores. **DEVIZES:** Bluestone Gallery, St John's Art & Deco, Wiltshire Museum, Wine Street Gallery. **DORCHESTER:** Artsreach, Dorchester Arts, Duke's, Dorset County Museum, Frank Herring & Sons, Gallery on The Square, The Little Keep. **EAST**

**LAMBROOK:** East Lambrook Manor Gardens. **EXETER:** Academy of Music, Boston Tea Party, The Cavern, Corn Exchange, Exeter School of Art, Phoenix Arts Centre, Royal Albert Memorial Museum, Southgate Gallery, Uneath. **FROME:** Black Swan Arts, Cheese and Grain, Fiat Lux, Hubnub Centre, Merlin Theatre, Mount, Rook Lane Arts. **GILLINGHAM:** Bowridge Gallery, The Idea Works, Slade Centre. **GLASTONBURY:** Abbey Muse Gallery, Bocabar, Glastonbury Galleries, Red Brick Building, Rural Life Museum. **HEMYOCK:** Healthy Living Centre. **HIGHCLIFFE:** In The Frame. **HOLTON HEATH:** Holton Lee. **HONITON:** The Beehive, Boston Tea Party, Hybrid Gallery, Strummer Pink, Thelma Hulbert Gallery. **ILMINSTER:** Dillington House, Ilminster Arts Centre, Millhouse. **LANGPORT:** 4 Every Cloud, Art Tea Zen, Shakspeare Glass, Somerset Art Works. **LANGTON MATRAVERS:** Burngate Stone Carving Centre. **LYME REGIS:** Blue Lias, Coombe Street Gallery, Fine Art Framing, Marine Theatre, Studio 19, Town Mill. **MARLBOROUGH:** Framemakers. **MARTOCK:** 303 Gallery, Martock Gallery. **MERE:** Beaumont Gallery. **MILDENHALL:** Rabley Contemporary Drawing Centre. **MILTON ABBAS:** Dorset Crafty Barn, Flux'n'Flame. **MINEHEAD:** Courtyard Framing, Leo Davey Gallery, Regal Theatre. **MORCOMBELAKE:** Artwave West. **MUCHELNEY:** John Leach Gallery. **NEW MILTON:** Forest Arts. **NORTH CURRY:** Community Café. **OTTERTON:** Otterton Mill. **POOLE:** Arts University Bournemouth, Bournemouth University Atrium Gallery, Guildhall Gallery, Josephine Wall Gallery, Lighthouse, The Gallery Upstairs, Poole Museum. **PORLOCK:** Churchgate Gallery, Melody Art. **PORTLAND:** B-Side Outpost, White Stones. **SALISBURY:** City Hall, Fisherton Mill, Framemakers, Noble Art Supplies, Salisbury Arts Centre, Salisbury Museum, Salisbury Playhouse, Studio 53, Wiltshire Gallery, Young Gallery. **SEATON:** Arts Café. **SEAVINGTON:** Village Shop. **SHAFTESBURY:** The Cygnet, Grosvenor Hotel, Salt of the Earth, Shaftesbury Arts Centre. **SHEPTON MALLET:** One Craft Gallery. **SHERBORNE:** Artslink, Jerram Gallery, New Digby Hall, Old Barn Framing Gallery, Winstone's. **SIDMOUTH:** East Devon Art Academy, Flo and Us, Kennaway House, Winstone's. **SOMERTON:** ACE Arts, Gifted Company & Gallery Coffee Shop. **SOUTH CADBURY:** Chapel Cross Tea Rooms. **SOUTH**

**PETHERTON:** David Hall. **STALBRIDGE:** Dike & Sons. **STOKE ST GREGORY:** Willows & Wetlands Centre. **STOURHEAD:** First View Gallery. **STREET:** Millfield School Atkinson Gallery, Strode Theatre. **STURMINSTER NEWTON:** The Exchange, Poet's Corner, Wessex Photographic. **SWANAGE:** Durlston Castle, L'Artishe Gallery, Little Green Gallery, Mowlem Theatre, Mulberry Bush Gallery, Purbeck New Wave Gallery, Quarr Gallery, Sansom Gallery. **TAUNTON:** Brewhouse Theatre, CIC CIC, Framers, Ginger Fig, Jane Amour, Mount Somerset Hotel, Queen's College, Shakspeare Glass, Tacchi-Morris Arts Centre, University Centre Somerset. **TINCLETON:** Tincleton Gallery. **TISBURY:** Messums Wiltshire. **TIVERTON:** Lantic Gallery. **TROWBRIDGE:** Arc Theatre, The Lamb, Trowbridge Arts. **VERWOOD:** The Hub. **WAREHAM:** Creative Gallery, Furzebrook Studios, Priory Hotel, Rex Cinema. **WATCHET:** Contains Art. **WELLINGTON:** Old Brick Workshop. **WELLS:** A2 Gallery, Andelli Art, Good Earth, Heritage Courtyard Studios, Somerset Guild of Craftsmen Gallery and Shop. **WEST BAY:** Sladers Yard. **WEST COKER:** Lanes, Old School Room. **WESTHAY:** Somerset Crafts. **WESTON-SUPER-MARE:** Frame Station, LT Gallery, Playhouse, Weston College. **WEYMOUTH:** Cackleberry Frames, Gallery on The Wey, Leighton Gallery, Weymouth College. **WILLITON:** Breeze Art Gallery. **WIMBORNE:** Allendale House, Square Records, Walford Mill Craft Centre. **WOODBURY:** Woodbury Studio Gallery. **WORTON:** Old Mill Gallery. **WRINGTON:** Barleywood Studios. **YEovil:** Octagon Theatre. **YETMINSTER:** Old School Gallery.   
Plus selected TOURIST INFORMATION CENTRES and LIBRARIES throughout Wessex.

**EVOLVER IS SPONSORED BY:**  
ACE Arts • Acoustic Distribution • Activate The Arts Development Company  
Atkinson Gallery • Aztec Media • B-Side Black Swan Arts • Boilerhouse Gallery Bridport Arts Centre • Caldecourt Productions The Creative Gallery • Dorchester Arts Dorset Visual Arts • Exeter School of Art Lighthouse • Mount • Octagon Theatre Sladers Yard • Somerset Art Works Stephens & George • Thelma Hulbert Gallery Tincleton Gallery • Walford Mill Crafts Weymouth College • Wiltshire Creative





BRIDPORT ARTS CENTRE  
STAFF & TRUSTEES PRESENT

# OUR FIRST EVER AUCTION OF PROMISES BENEFITTING BRIDPORT ARTS CENTRE

Tickets £4 Includes drinks & canapés on arrival



**SEE WHAT YOU CAN WIN!**  
A week at Minack House Cornwall, A Signed Martin Parr Photograph, Champagne Croquet game for up to 6 people, A couture dress designed, fitted and made by our Director Curtis, A three course dinner for two with wine at The Ollerod, a guided tour around the House of Lords and much much more!

Enjoy a great evening and bid on our fantastic auction lots. Bring your family, friends and neighbours to support your local Arts Centre.

**THURSDAY 6 DECEMBER 7 PM**

ADVANCED BOOKING ADVISED  
— THANK YOU TO OUR GENEROUS SUPPORTERS —

[www.bridport-arts.com](http://www.bridport-arts.com) 01308 424204 BRIDPORT ARTSCENTRE




# CHRISTMAS AT THE MILL 2018

10 NOVEMBER – 7 JANUARY

Open Tuesday to Saturday 10am – 5pm  
Sunday 11am – 4pm

Knobcrook Road, Wimborne, Dorset BH21 1NL  
[www.walfordmillcrafts.co.uk](http://www.walfordmillcrafts.co.uk) 01202 841400



evolvermagazine

THE ARTS DEVELOPMENT COMPANY

# Culture+

Business · Tourism · Social Impact

**Culture+** is a free programme of activities to support artists, arts organisations and SME tourism businesses to thrive in Dorset, Bournemouth and Poole.

- ◆ Sign up to our free workshops and courses to help your creative career thrive
- ◆ Build your network at our inspiring events across the county
- ◆ Join the discussion at our **Culture<sup>3</sup>** events – Culture Creative Conversations with a panel of industry experts on a variety of themes
- ◆ Access a range of free toolkits and resources online

See more **Culture+** at:  
[www.theartsdevelopmentcompany.org.uk](http://www.theartsdevelopmentcompany.org.uk)  
or call any of the Culture+ team on:  
**01305 225524**

Funded by:

 **European Union**  
European Regional Development Fund

 **ARTS COUNCIL ENGLAND**

Supported by

 **Dorset**  
County Council

A partner in:







'Angel Baby'

Coming Home  
**Leonard Green**

5 November – 8 December 2018

**Atkinson GALLERY**



**MILLFIELD**

Millfield, Street, Somerset BA16 0YD • Monday - Saturday 9.30am - 5pm  
[www.atkinsongallery.co.uk](http://www.atkinsongallery.co.uk) • Tel: 01458 444322 / 444176

